

NiceLabel Software

NiceLabel Quick Start Guide

**Euro Plus d.o.o.
Niceware International, LLC**

English Edition

Rev-0903

www.nicelabel.com

COPYRIGHTS

Copyright © 1995-2009 Euro Plus d.o.o. All rights reserved.

www.europlus.si

www.nicelabel.com

Information in this document is subject to change without notice. The software described in this document is furnished under a license agreement or nondisclosure agreement. The software may be used or copied only in accordance with the terms of those agreements. No part of the publication may be reproduced, stored in a retrieval system, or transmitted in any form or any means electronically or mechanically, including photocopying and recording for any purpose other than the purchaser's personal use without the written permission of Euro Plus d.o.o.

Euro Plus d.o.o.

Ulica Lojzeta Hrovata 4c

SI-4000 Kranj

Slovenia

www.europlus.si

TRADEMARKS

NiceLabel[®], NiceLabel Pro[®], NiceForm[®], NiceWatch[®], NiceMemMaster[®], NiceData[®], NicePrint[®], NiceDriver[®], NiceLabel Print Center[®], Enterprise Print Manager[®], NiceWatch Server[®] and NiceWatch Enterprise[®] are trademarks or registered trademarks of Euro Plus d.o.o. in the U.S.A. and other countries.

Niceware[®] is a registered trademark of Niceware International, LLC. Microsoft and Windows are registered trademarks of Microsoft Corporation. Other brands and their products are trademarks or registered trademarks of their respective holders and should be noted as such.

Contents

1. Introduction	4
1.1 Welcome to NiceLabel	4
1.2 NiceLabel Product Overview	4
1.2.1 NiceLabel Standard Series	4
1.2.2 NiceLabel Enterprise Series	6
1.2.3 NiceLabel Developer Series	7
1.3 NiceLabel Software Package	7
1.4 About this Manual	7
1.4.1 Typographical Conventions	8
1.4.2 Software Restrictions	8
2. Installation and Activation	9
2.1 System and Software Requirements	9
2.1.1 NiceLabel Single User Edition	9
2.1.2 NiceLabel Network Edition	9
2.1.3 Pocket NiceLabel Edition	10
2.2 Installing NiceLabel Software	10
2.2.1 Close all Software Applications	10
2.2.2 Run Installation	11
2.2.3 Define Setup Options	12
2.2.4 Install Printer Driver	13
2.3 Installing NiceLabel Network Software	16
2.3.1 Install NiceLabel Software on the Server	17
2.3.2 Install NiceLabel Software on the Workstation	18
2.4 Activating NiceLabel Software	19
2.4.1 Activate NiceLabel with a Hardware Key	20
2.4.2 Activate NiceLabel Single User Edition	22
2.4.3 Activate NiceLabel Network Edition	26
2.4.4 Activate Software with License from Enterprise Print Manager	30
2.4.5 Activate Additional Network Clients	32
2.5 NiceLabel Demo Mode	33
2.6 Installing NiceLabel Upgrades	33
2.6.1 Install NiceLabel Minor Version Upgrade	34
2.6.2 Install NiceLabel Major Version Upgrade	34
2.6.3 Install NiceLabel Edition Upgrade	35
2.7 Installing NiceLabel Network Upgrades	36
2.7.1 Install NiceLabel Minor Version Network Upgrade	36
2.7.2 Install NiceLabel Major Version Network Upgrade	37
2.7.3 Install NiceLabel Network Upgrade from Single User Edition	37

2.8	Activating NiceLabel Upgrades	38
2.8.1	Activate NiceLabel Minor Version Upgrade	38
2.8.2	Activate NiceLabel Major Version Upgrade	38
2.8.3	Activate NiceLabel Edition Upgrade	41
2.8.4	Activate NiceLabel Network Major Version Upgrade	42
2.8.5	Activate NiceLabel Network Upgrade from Single User Edition	45
2.8.6	Activate NiceLabel Network License Pack	45
2.9	Registering NiceLabel Software.....	48
2.10	Uninstalling NiceLabel software	48
2.10.1	Software license key deactivation.....	48
2.10.2	Hardware license key deactivation	49
2.10.3	NiceLabel Network license key deactivation	49
3.	Label Design and Printing	50
3.1	Designing a Basic Label	51
3.1.1	Create a Basic Label	51
3.1.2	Add Variable Fields to a Label	62
3.1.3	Change Common Printer Settings.....	66
3.2	Linking a Label to Text Databases	67
3.2.1	Connect to a Database.....	67
3.2.2	Format the Data with the Text File Wizard	68
3.2.3	Place Database Fields on a Label.....	70
3.2.4	Use Print Preview to Select Data and View a Label.....	71
3.2.5	Print a Label	73
3.3	Designing an Advanced Label.....	74
3.3.1	Create a Label with GS1-128 Compliance	74
3.3.2	Link a Label to Advanced Databases.....	77
3.3.3	Using Advanced Objects and Functions in NiceLabel	78
3.4	Designing an RFID Smart Label	82
3.4.1	Create RFID Smart Label	82
3.4.2	Encode RFID Tag	82
4.	Other NiceLabel Applications	85
4.1	Label Printing Using Custom Forms	85
4.1.1	Create a Form.....	86
4.1.2	Modify a Form	88
4.2	Label Printing Using NicePrint	89
4.3	Automatic Label Printing	90
4.4	Storing Fonts and Graphics to the Printer	90
4.5	Managing Databases.....	91
5.	Technical Support	92
5.1	Online Support.....	92
5.2	Contact Information.....	92

6. Index	94
-----------------	-----------

1. Introduction

1.1 Welcome to NiceLabel

NiceLabel is a family of professional labeling software products that brings a complete bar code printing solution and RFID Smart Label printing to desktop, mobile and enterprise users. NiceLabel offers an easy-to-use interface and meets any label design and printing requirement for efficient label printing solutions to users in retail, logistics, health care, chemical, automotive and other industries. The main product lines include NiceLabel Suite, NiceLabel Pro, NiceLabel Express and Pocket NiceLabel.

NiceLabel can be used with any 32-bit and 64-bit Windows operating system: Windows 2000, Windows XP, Windows Server 2003, Windows Server 2008 and Windows Vista.

The latest software version is available as a demo download on the NiceLabel Web site at **www.nicelabel.com**.

1.2 NiceLabel Product Overview

1.2.1 NiceLabel Standard Series

NiceLabel Suite

Complete software solution for any kind of label design and print requirement. Multiple connectivity options allow users to perform stand-alone printing or integrate label printing into any network environment.

NiceLabel Suite provides you with interactive label printing capabilities such as integrating label printing to existing applications (ActiveX) or non-programming embedding of label printing to existing systems (NiceWatch).

NiceLabel Suite includes the following modules:

- **NiceLabel Pro:** Main application for label design and printing.

- **NiceForm:** Create your own custom designed data-entry applications without requiring any programming skills.
- **NiceWatch:** Integrate and automate label printing to any existing information system.
- **NiceMemMaster:** Download fonts and graphics to the computer's memory card for optimized label printing.
- **NiceData:** Manage your databases.
- **NicePrint:** Manage fast and easy label printing.

NiceLabel Pro

Full-featured software designed for professional label design and printing, including complete database support and ActiveX integration possibilities. A wide range of features and options makes NiceLabel Pro a perfect and easy-to-use tool for any labeling requirement.

NiceLabel Pro includes the following modules:

- **NiceLabel Pro:** Main application for label design and printing.
- **NiceMemMaster:** Download fonts and graphics to the computer's memory card for optimized label printing.
- **NiceData:** Manage your databases.

NiceLabel Express

Wizard-based software meeting basic barcode labeling needs. The entry-level software includes many design elements of the Pro edition with the emphasis on simplified user interaction.

NiceLabel Pro Print Only

NiceLabel Pro Print Only offers printing of pre-designed labels but cannot be used to design and alter existing labels. Advanced settings for changing the labels are not available.

NiceLabel Suite Print Only

NiceLabel Suite Print Only offers printing of pre-designed labels, using pre-designed forms and automatic printing from pre-designed trigger

actions. NiceLabel Suite Print Only cannot be used to design and alter existing labels, forms and trigger configuration. Advanced settings for changing the labels are not available.

NiceLabel Pocket PC Designer

NiceLabel Pocket PC Designer is a software package for desktop Windows computers that brings the power of label and form design to portable Windows CE terminals. After you have designed the required labels on the desktop PC, synchronize the labels with and print them from the Windows Mobile Device.

Pocket NiceLabel

Pocket NiceLabel is a program package for Windows CE that brings the power of label printing to portable Windows CE computers (Windows Mobile Device). Pocket NiceLabel is part of the editions NiceLabel Suite or NiceLabel Pocket PC Designer.

1.2.2 NiceLabel Enterprise Series

NiceLabel Print Center

NiceLabel Print Center is the enterprise solution for client/server based label printing and centralized system management. With label printing based on NiceLabel Pro, the Print Center consolidates the overview and management of the label design and printing to one central server. You can control the printing queues from one location, review events and enable alerts to keep you informed of the server status.

NiceWatch Enterprise

NiceWatch Enterprise is the enterprise solution for centralized integration of multi-threaded and high-volume label printing. NiceWatch Enterprise is based on the standard NiceWatch middleware module but provides with the NiceWatch Server module multiple print engines and a central server for trigger and printer monitoring and management.

Integrate label printing capabilities to the existing software and hardware systems. You can remove the processing bottleneck and print labels to any number of label printers using the multi-threaded print engine.

1.2.3 NiceLabel Developer Series

NiceLabel SDK

NiceLabel SDK is an ActiveX integrator edition of the NiceLabel software developed for software publishers who need label printing capabilities in their software. NiceLabel SDK can be embedded in existing information systems or existing applications to provide support for label printing. NiceLabel SDK provides all label printing functionality of the NiceLabel software.

NiceLabel WebSDK

Similar to NiceLabel SDK the NiceLabel WebSDK edition is developed for software publishers who work with Web applications. NiceLabel WebSDK provides all label printing functionality of the NiceLabel software.

1.3 NiceLabel Software Package

Before you start installing the NiceLabel software check the content of the package to ensure it is complete. The package must include:

- NiceLabel CD
- Quick Start Guide
- Key number on a sticker or a hardware key (not available with all editions)

Please contact your software vendor if your package misses any of the mentioned items.

1.4 About this Manual

The NiceLabel Quick Start Guide helps you design and print labels quickly. The NiceLabel Quick Start Guide is an excerpt of the complete NiceLabel User Guide that you can obtain on the NiceLabel CD or online at **www.nicelabel.com**.

1.4.1 Typographical Conventions

Text that appears in **bold** refers to menu names, file names like **SETUP.EXE** and buttons like the **OK** button.

Text that appears in *italic* refers to confirming actions like *Read only*, locations like *Folder* or software window names.

Text enclosed in <Less-Than and Greater-Than signs> refers to keys from the desktop PC keyboard like <Enter>.

Variables are enclosed in [brackets] like [variable].

1.4.2 Software Restrictions

All features explained in the Quick Start Guide are available in the NiceLabel Suite edition. However, some features are not available in the NiceLabel Pro or NiceLabel Express editions. Sections discussing features not available with NiceLabel Pro or NiceLabel Express will display an alert icon.

Not in



The feature is not available in NiceLabel Express.

Not in



The feature is not available in NiceLabel Pro.

2. Installation and Activation

2.1 System and Software Requirements

2.1.1 NiceLabel Single User Edition

To run the program you need at least the following:

- Pentium based computer with at least 64 MB of free RAM.
- One of the 32-bit and 64-bit Windows operating systems: Microsoft Windows 2000, XP, 2003, 2008 and Vista.
- Hard disk with 50 to 250 MB of free disk space (depending on the installation options).
- CD-ROM drive.
- Support for OLE DB database drivers. Recent Windows operating systems have included OLE DB database drivers. If your operation system does not have the database support, the installation wizard will prompt you to install it.
- Administrator rights to the local computer during installation.

2.1.2 NiceLabel Network Edition

To run the Network Edition you need to fulfill the following:

- All requirements for NiceLabel single user edition (see above).
- Network interface card in each workstation.
- Computer acting as a NiceLabel server. Any server operating system that allows file sharing with Windows system (any Windows, UNIX or Netware).
- Each client must have granted full access (read, write, delete) to NiceLabel System folder on the server.

2.1.3 Pocket NiceLabel Edition

To work with Pocket NiceLabel, you need to have the following:

A. Desktop PC to design labels and forms with one of the following Windows operating systems:

- Windows 2000 Professional with Service Pack 1 or higher
- Windows XP
- Windows Server 2003
- Windows Server 2008
- Windows Vista

B. Windows Mobile Device meeting the following requirements:

- Installed ActiveSync Version 4.0 or higher
- One of the following Windows operating systems:
 - Pocket PC 2003
 - PocketPC 2003 SE
 - Windows CE 4.2 (CF SP 1)
 - Windows CE 5.0
 - Windows Mobile 2005

2.2 Installing NiceLabel Software

When you put the NiceLabel CD in your CD-ROM drive, the installation/demonstration program will start automatically. You can browse the directory of the CD, look at the brochures and technical documentation, sample files and other documents.

Note: If you are using 2000, XP, 2003 or Vista, you have to log on as a user with administrator rights to be able to perform installation.

2.2.1 Close all Software Applications

To ensure complete installation of the NiceLabel software, close all open software applications before you start installing the NiceLabel software.

2.2.2 Run Installation

Use the installation wizard to install NiceLabel software on your desktop PC. To install NiceLabel software, do the following:

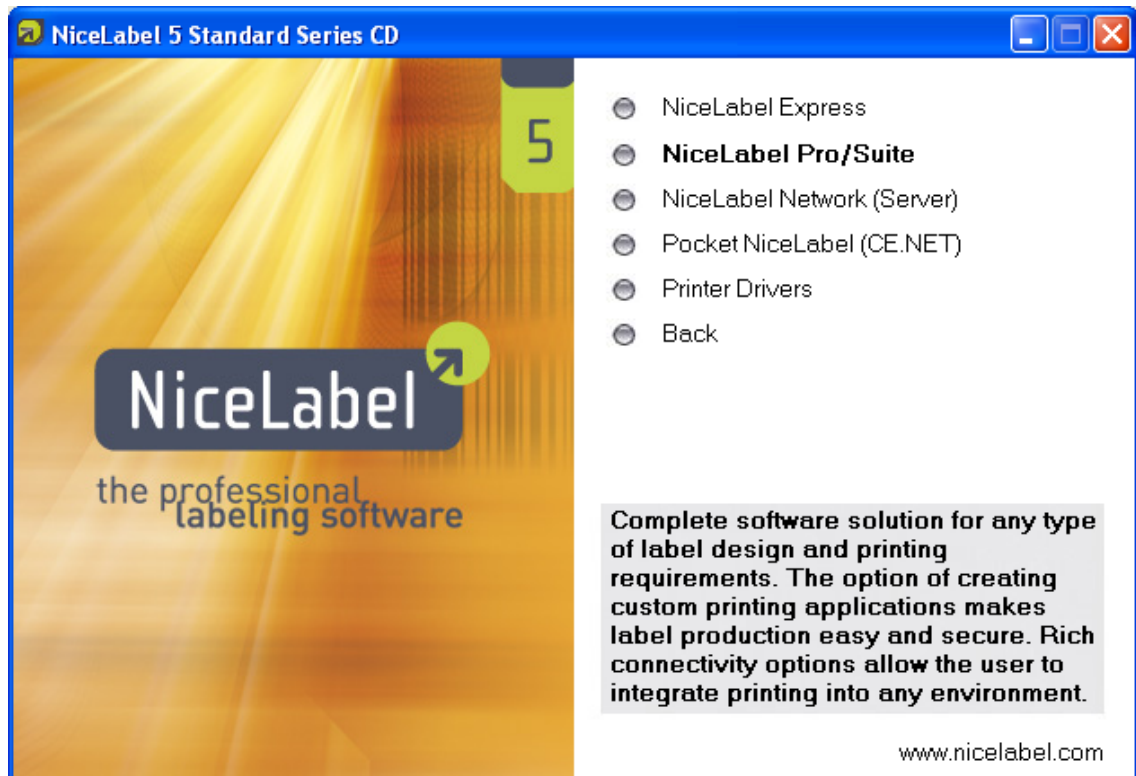
1. Put the NiceLabel CD in your CD-ROM drive. An installation window will open automatically.



Running NiceLabel auto-run application from the CD

Note: If the installation wizard does not start automatically, go to the main CD directory of your NiceLabel CD and double-click on the file **START.EXE**.

2. Click on **Install**. A new window will open showing all NiceLabel editions.



Selecting NiceLabel edition for installation

3. Click on the NiceLabel software you want to install. Follow the prompts.

Note: Make sure to select the appropriate installation type in the installation wizard. The same installation wizard is used for all NiceLabel editions.

2.2.3 Define Setup Options

You can select the components of the selected NiceLabel edition that you want to install. You can choose among the following three types of installations:

- **Full Installation** - installs all NiceLabel components in all available languages.
- **Compact Installation** - installs only minimal set of components required for NiceLabel application to work correctly. Help and sample files are not installed.

- **Custom Installation** – gives you the option to select individual components for installation.

To continue installation, do the following:

1. Click on the **Next** button.
2. Specify if shortcuts to NiceLabel software should be created on the desktop or in Quick Launch area.
3. Click on the **Next** button.
4. If you use Windows firewall, add some of the NiceLabel components to firewall exception list so they can communicate with the other components. It is recommended to leave the defaults unchanged.
5. Click on the **Next** button then on the **Install** button to finish the installation.
6. The Start menu in your Windows will show a new program group for the NiceLabel software that contains shortcuts for all NiceLabel applications.

2.2.4 Install Printer Driver

You can use the NiceLabel software to design and print labels to standard office printers (laser, inkjet or matrix) or to professional label printers (thermal printers). If you own a thermal printer, you have to install the appropriate printer driver before you can print with the label printer. You will find NiceDrivers for all major thermal printer brands on the NiceLabel CD and on the NiceLabel Web site.

You can install a NiceDriver for your thermal printer in the following three ways:

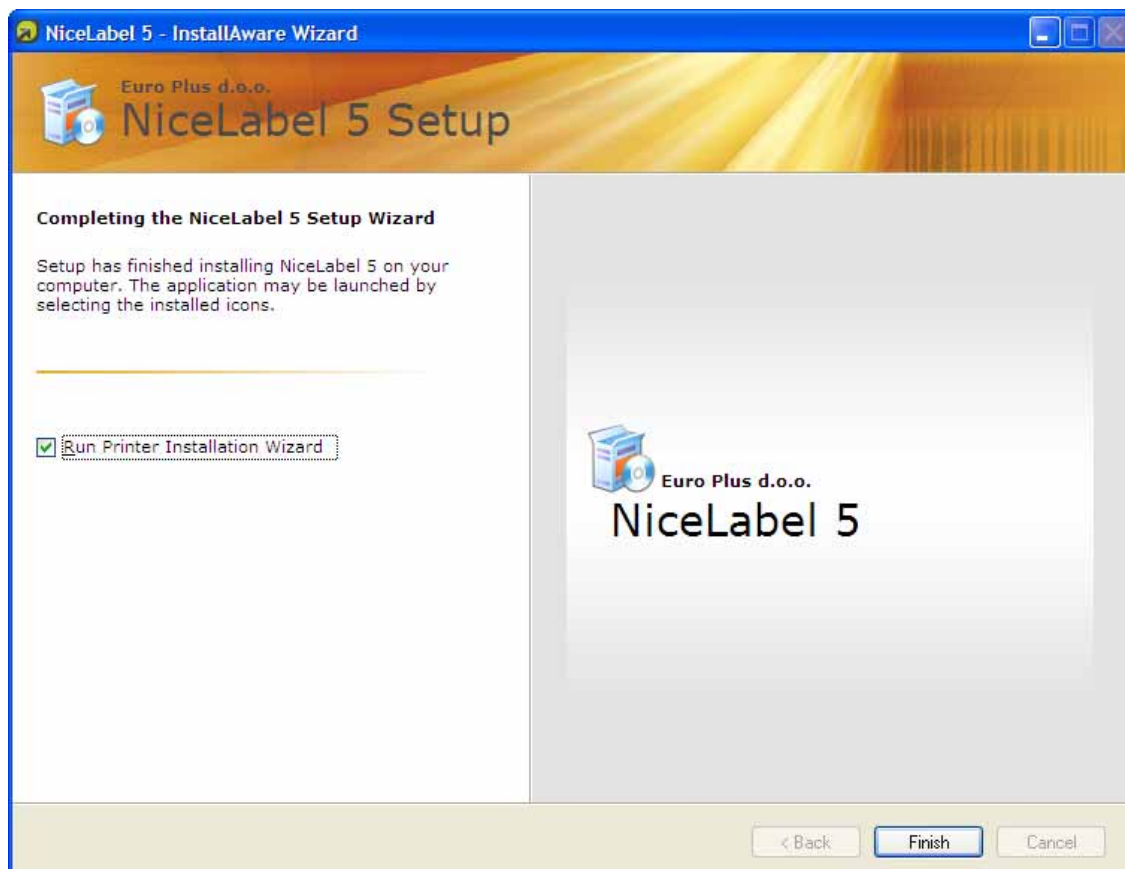
- Install within the NiceLabel software installation.
- Use the Printer Installation Wizard.
- Use the Windows *Add Printer* Wizard.

Printer driver installation within NiceLabel software installation

To continue installing the NiceDriver after setup has finished the NiceLabel software installation, do the following:

1. Select the option **Run Printer Installation Wizard**.

2. Click on the **Finish** button.



Installing NiceLabel driver for thermal printer

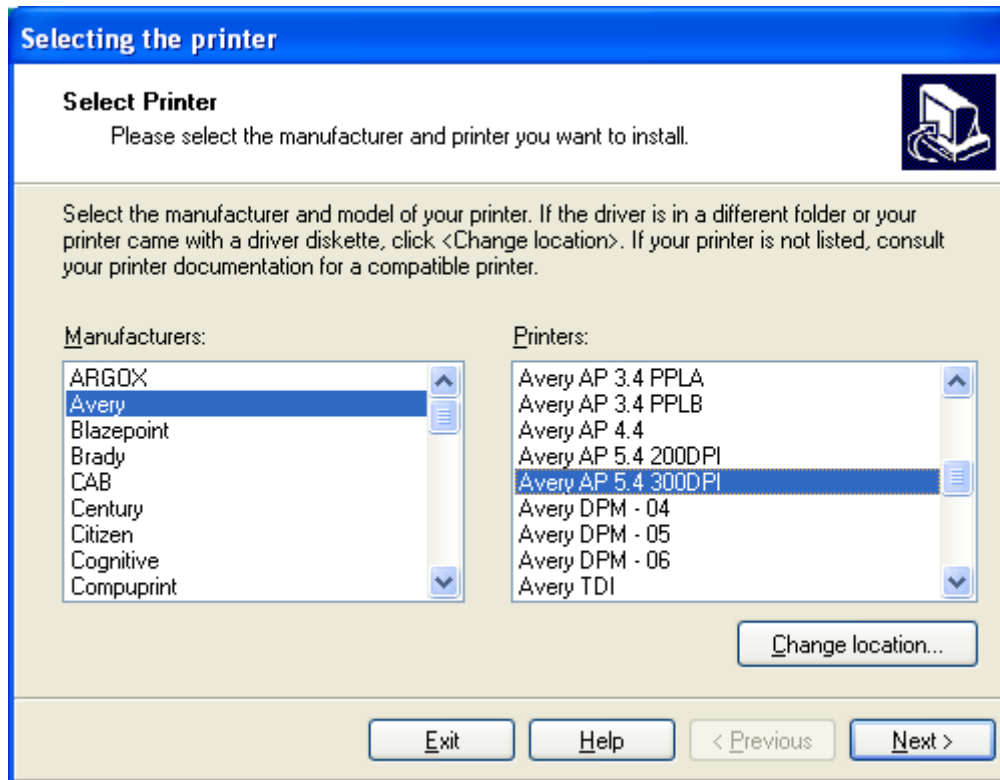
3. Printer Installation Wizard will open.
4. Select your printer from the list. Click on the **Next** button.
5. Select the port where you have connected your printer and click on the **Finish** button.

Note: This type of printer installation is available only when running installation from NiceLabel CD.

Printer driver installation using the Printer Installation Wizard

1. Put the NiceLabel CD in your CD-ROM drive. The main installation application should start automatically. If not, start Windows Explorer, browse to the CD and double click on the file **START.EXE**.
2. Click on **Installation**. A new window will open showing all NiceLabel editions.
3. Click on **NiceDrivers**. The printer installation wizard will start.

4. Select your printer from the list. Click on the **Next** button.



Selecting thermal printer

5. Select the port where you have connected your printer and click on the **Finish** button.

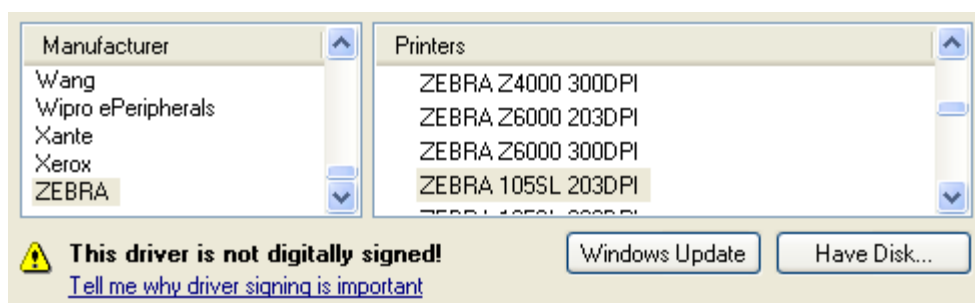
Note: If you have downloaded the installation for NiceDriver from the NiceLabel Web site, run the downloaded .EXE file and follow the steps four (4) and five (5).

Printer driver installation using the Windows Add Printer Wizard

1. Open Control Panel from Settings option in Start menu.
2. Open Printers (Printers and Faxes) and select **Add a Printer**.
3. Follow the Add Printer Wizard prompts. The actual steps vary depending on the version of your Windows operating system. It is only important to click on the **Have disk** button in the step where you can select printer manufacturer and model.
4. Put the NiceLabel CD in your CD-ROM drive (if not already done so) and browse to the folder *\Drivers*.

5. Select the folder of your printer name and click on **Open/OK** buttons to return to the Add Printer Wizard. You will see the list of all available printer models of the selected printer.
6. Select your model, click on the **Next** button and finish the installation.

Note: Windows 2000 and Windows XP might prompt you to cancel the installation process because NiceDrivers do not have the digital signature by Microsoft. **It is safe to continue with the installation at this point.** NiceDrivers have not been certified by Microsoft but have been subject of intensive pre-release testing and comply with Microsoft's demands for printer drivers.



Windows XP warning for not digitally signed drivers

2.3 Installing NiceLabel Network Software

NiceLabel Network software consists of two parts: the server and the client.

Note: NiceLabel Network does not run if server and client are connected over WAN, internet or similar long-distance connections.

Before you install both parts you must provide full access permission to the folder on the server computer where you want to install the NiceLabel software. Then install the NiceLabel software on the server computer. Install the NiceLabel software (client) on the workstation next. Client installation is possible from the NiceLabel server or from the NiceLabel CD.

Note: NiceLabel Express and NiceLabel Pro editions are not available with network licenses. Only NiceLabel Suite edition is available with network licensing.

2.3.1 Install NiceLabel Software on the Server

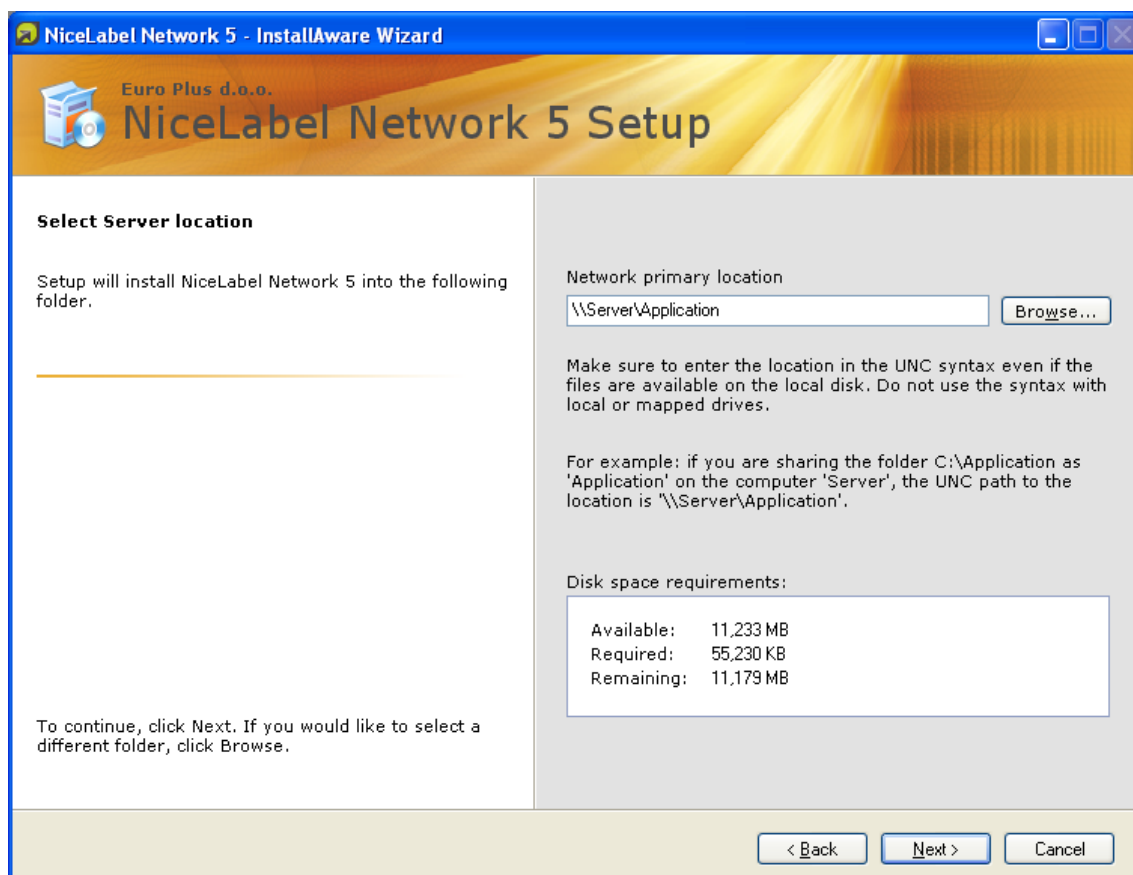
Please follow these steps to install NiceLabel software on the server computer:

1. Make sure that the folder on your server where you want to install the NiceLabel software provides full access admission.
2. Put the NiceLabel CD in your CD-ROM drive. An installation window will open automatically.

Note: If the installation wizard does not start automatically, go to the main CD directory of your NiceLabel CD and double-click on the file **START.EXE**.

3. Click on **Install**. A new window will open showing all NiceLabel editions.
4. Click on **NiceLabel Network (Server)**.
5. Follow the installation prompts.
6. When prompted to *Select Server Location*, type in (or browse) the network location where you will install the server part of NiceLabel Network edition and click on **Next**.

Note: Make sure to use UNC syntax when referring to the server location even if you install the server part on the local disk. Use the syntax `\\server\share\file` and not the syntax with the mapped drive like `W:\share\file`.



Selecting network path for NiceLabel server installation

7. You could enter the location of the secondary server that will take over when primary server fails. If you have a computer to act as a secondary NiceLabel server, enter the UNC path to the appropriate folder.

Note: If unsure, leave the edit field empty. The secondary server is optional.

8. Click on the **Next** button to finish the installation.

Note: You should select a server and disk share that is visible to all workstations in the domain where you intend to use the NiceLabel software.

2.3.2 Install NiceLabel Software on the Workstation

There are two ways how you can install the NiceLabel Network client on the workstation:

- **Installing the client from the CD.**
Install NiceLabel Suite single user software from the NiceLabel CD as described in the chapter **Installing NiceLabel Software**.
- **Installing the client from the network.**
Install NiceLabel client by running the installation file **NiceLabel-ProSuite5.exe** from the NiceLabel server.

Follow these steps to install the client from the network:

1. Open Windows Explorer.
2. Browse to the NiceLabel server computer in **My Network Places**.
3. Browse to the folder where NiceLabel software is installed on the server.
4. Double click on the file **NiceLabel-ProSuite5.exe**.
5. Follow on-screen instructions. Just make sure to install **NiceLabel Suite** edition, not NiceLabel Pro. For detailed instructions you can also refer to the installation of the single user edition in the chapter **Installing NiceLabel Software**.

Note: NiceLabel client installed on the workstation must have full access (read, write, delete) to the NiceLabel **System** subfolder on the server computer.

6. Click on the **Finish** button to finish the installation.

2.4 Activating NiceLabel Software

The following activation instructions work for single-user and network NiceLabel editions.

You have to activate the NiceLabel software if you want to use it. If you do not complete the activation process, NiceLabel will run in demo mode.

The Product Activation utility will always run after installation. If you want to change the activation type or add more licenses to your network edition, you can also start activation from the NiceLabel software by opening the *Manage License* window under the *Help* menu.

There are three types of NiceLabel software activation:

- Hardware key activation



- Single-user Software key activation
- Network Software key activation
- Enterprise Print Manager license server

Hardware key activation: NiceLabel software editions with hardware key can be used immediately after installation. If you have a NiceLabel edition with a hardware key, please skip ahead to the chapter **Activate NiceLabel with a Hardware Key**.

Single-user Software key activation: NiceLabel software editions with a single-user software key need to run the NiceLabel activation application in order to obtain full functionality. The Software Key number is a sequence of 25 characters.

Network Software key activation: You can activate the server part of the NiceLabel Network edition the same way as NiceLabel editions that come with a single-user software key. The Network Software Key number is a sequence of 25 characters. Activating the server part will also activate the client on the current workstation. If you upgrade the network edition with additional users, you have to install and activate each additional workstation separately. Please refer to the chapter **Activate Additional Network Clients**.

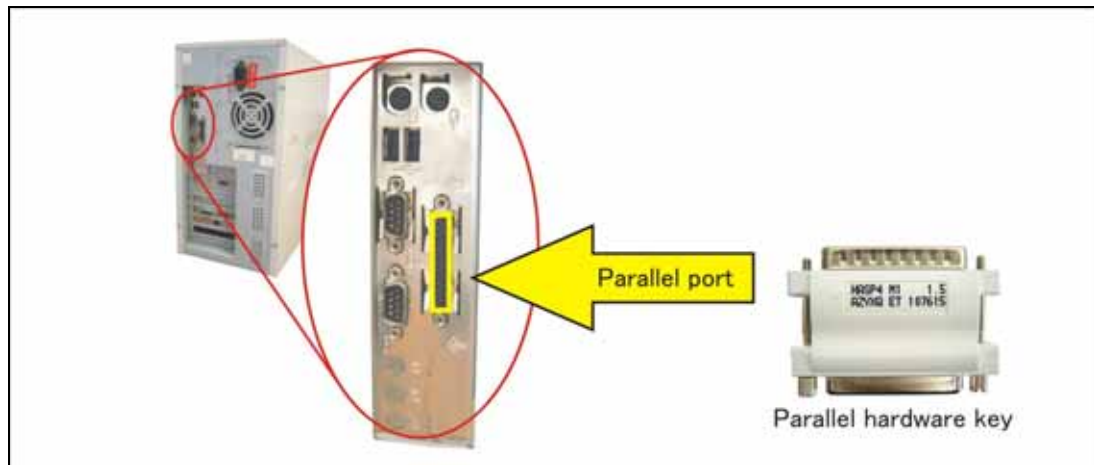
Enterprise Print Manager license server: You can activate the NiceLabel client with the license coming from the Enterprise Print Manager (EPM). Enterprise Print Manager is available with the NiceLabel Enterprise Series edition **NiceLabel Print Center**. Before you can activate the client, you must activate the NiceLabel Print Center.

2.4.1 Activate NiceLabel with a Hardware Key

You can activate the NiceLabel single user editions (Express, Pro and Suite) with a parallel or USB key. However, you cannot activate the NiceLabel network edition with a hardware key!

Make sure you have finished installing the NiceLabel software on your PC when you activate your NiceLabel single user edition with a hardware key.

Activate NiceLabel with a Parallel Key



To activate NiceLabel using a parallel key, do the following:

1. Shutdown your computer and switch off your printer.
2. Connect the hardware key directly to the parallel port (marked as LPT or PRN port) on your computer.

Make sure you connect the hardware key in such a manner that pins on the key plug into the holes in the computer port. Fasten the two screws to secure the key.

Note: Do not remove the screws or try to turn them inside out.

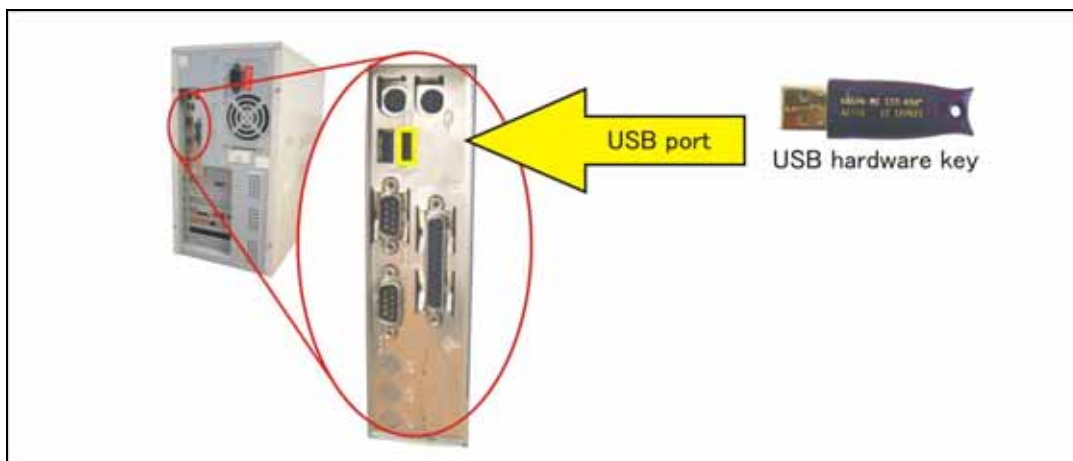
Never try to connect the key to a serial port on the computer or directly to a printer. You can permanently damage the hardware key as well as your computer equipment.

3. Start NiceLabel software. The **Warning** windows will open.
4. Click on **Manage License**. The *Manage License* window will open.
5. Select **Activate the package** and click on **Next**.
6. Select *Hardware Key* and click on **Next**. A new *Manage License* window will open showing the key license information for your NiceLabel software.
7. Click on the **Finish** button and NiceLabel will start in full working mode.

Note: If you own a serial printer, you cannot connect the printer to the hardware key directly because the connectors are not compatible. Always connect your serial printer to the serial port and hardware

key to the parallel port. Your printer does not need to print "through" the hardware key.

Activate NiceLabel with a USB Key



To activate NiceLabel using a USB key, do the following:

1. Plug the USB key into an available USB port.
2. Start NiceLabel software. The **Warning** windows will open.
3. Click on **Manage License**. The *Manage License* window will open.
4. Select **Activate the package** and click on **Next**.
5. Select *Hardware Key* and click on **Next**. A new *Manage License* window will open showing the key license information for your NiceLabel software.
6. Click on the **Finish** button and NiceLabel will start in full working mode.

2.4.2 Activate NiceLabel Single User Edition

You can activate NiceLabel automatically through the *Activation Server* or manually through the activation *Key Number Activation* Web site.

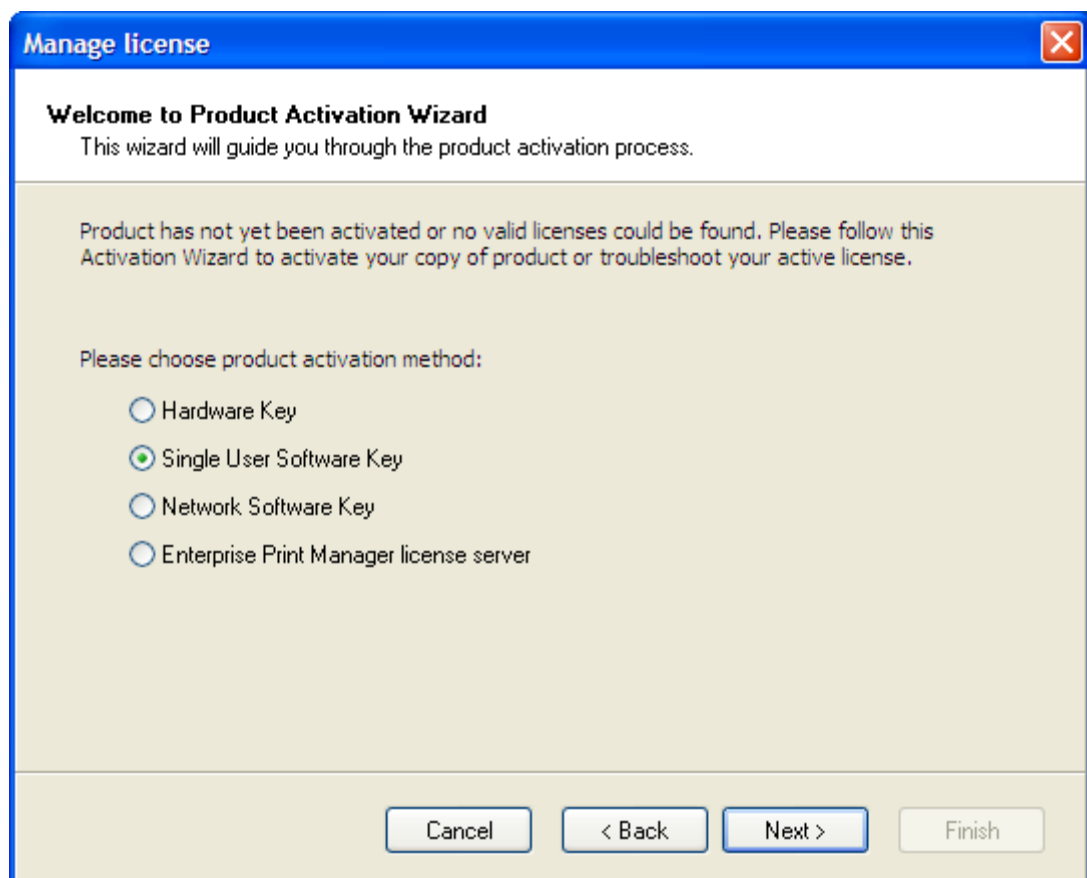
NiceLabel activation on the Web only works with single-user software key and network software key. If the computer that uses the NiceLabel software is not connected to the Internet, you will have to open the Activation Web page on a computer with Internet access to obtain the activation information.

Before you start the activation process of the NiceLabel software, get familiar with the following terminology:

- **Key number:** The sequence of 25 characters provided with the NiceLabel software.
- **Registration number:** Unique number generated during the activation process. The registration number validates the entered software key.
- **Activation code:** Issued on the NiceLabel activation Web site. The activation code activates the NiceLabel software on your computer.

To activate the NiceLabel software, do the following:

1. After the installation is complete, run NiceLabel software. The *Warning* window will open.
2. Click on **Manage License**. The *Manage License* window will open.
3. Select **Activate the package** and click on **Next**.



Selecting 'Single-user Software Key' activation

4. Select **Single-user Software Key** and click on **Next**.

5. Enter the required customer information and the key number.
6. Click on the **Next** button. The window *Manage License – Activation Code* will open.

Manage License

Activation Code
Enter activation code.

Please enter software activation code.

Key Number
XFK6M ZDUY4 URX76 EN6DJ MZR3G

Registration Number
TBASR 33ARG KF7BA TTRHR 6TQ94

Activation Code
| | | | |

If your computer is connected to the internet, you can select the automatic activation link.

Activation Code can also be acquired through the publisher's Activation Web page.

Automatic activation: [Connect to the Activation server](#)

Web page activation: http://www.nicelabel.com/nlactivation_dlp.html

Cancel < Back Next > Finish

Validating the key number

7. To activate the software automatically, click on the link **Connect to the Activation server** (recommended).
8. To activate the software manually, click on the Internet link for Web page activation. Your Internet browser will open the NiceLabel *Key Number Activation* Web site.
 - a. Enter the key number and the registration number. Enter other user information, if prompted.
 - b. Click on the **Activate** button to retrieve the Activation code.
 - c. Copy the Activation code and paste it in the field **Activation Code** in the open *Manage License – Activation code* window of the open NiceLabel software.

Key Number Activation

Welcome to the NiceLabel activation site. Please copy the data from your NiceLabel activation dialog box into the fields below. Then press the **ACTIVATE** button.

Key Number: - - - - *

Registration Number: - - - - *

Name:

Company:

Address 1:

Address 2:

Zip: City:

Country: *

E-mail: *

* - required

Internet activation web site

9. Click on the **Next** button and follow the prompts to complete the activation process.

Note: You can still activate the NiceLabel software if the computer does not have access to the Internet.

If the computer where you installed NiceLabel software does not have Internet access, do the following:

1. Follow the steps one (1) to four (4) from the previous section.
2. Write down the Key number and the Registration number.
3. Write down the Internet activation Web address.
4. Go to a computer with Internet access and open the activation Web site in the Internet Explorer.
5. Enter the Key number and the Registration number. Enter other user information when prompted.

6. Click on the **Activate** button to retrieve the Activation code. Write it down.

Note: The Key and Registration numbers, the Activation code and information in other fields are case-sensitive, so be careful when writing it down.

7. Go back to the NiceLabel computer where the window *Manage License* is still open.
8. Enter the Activation code.
9. Click on the **Next** button and follow the prompts to complete the activation process.

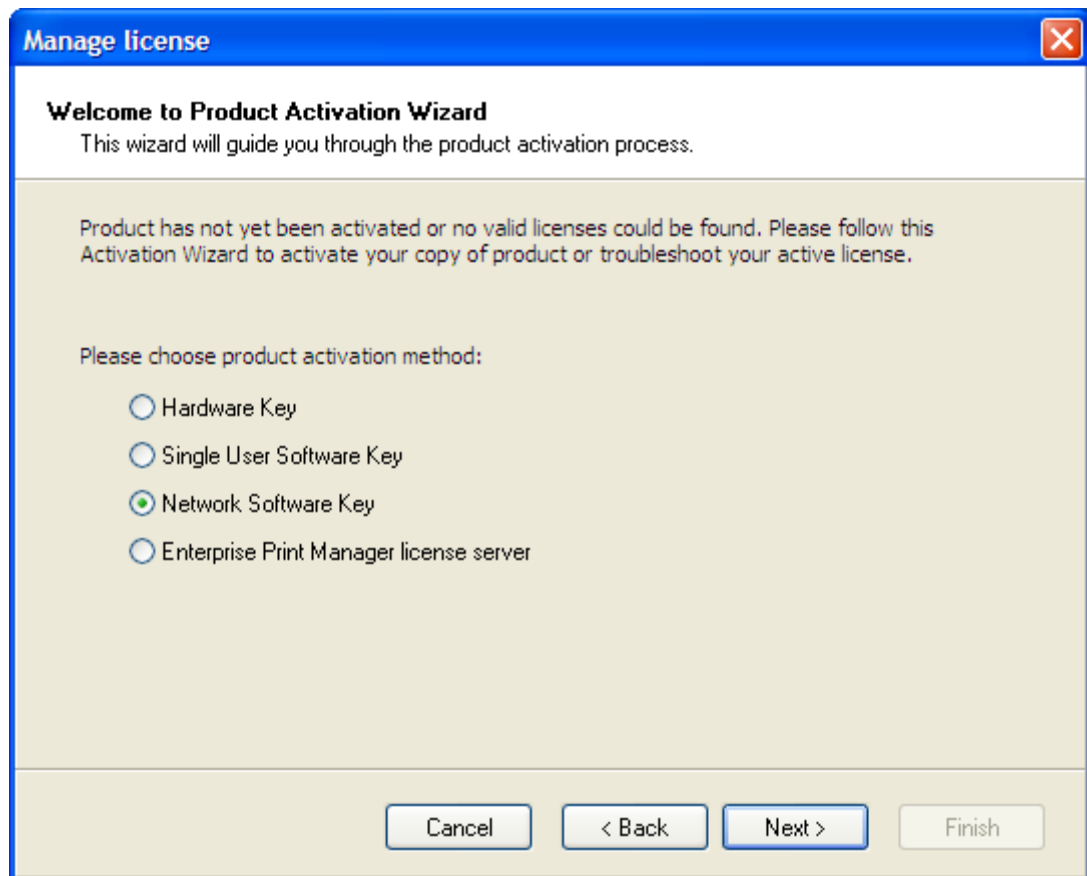
2.4.3 Activate NiceLabel Network Edition

You can only activate the NiceLabel network edition with a 25-digit software key. The network edition does not provide the activation option with a parallel or USB hardware key. Before you start the activation process of the NiceLabel software, get familiar with the following terminology:

- **Key number:** The sequence of 25 characters provided with the NiceLabel software.
- **Registration number:** Unique number generated during the activation process. The registration number validates the entered software key.
- **Activation code:** Issued on the NiceLabel activation Web site. The activation code activates the NiceLabel software on your computer.

To activate the NiceLabel network software, do the following:

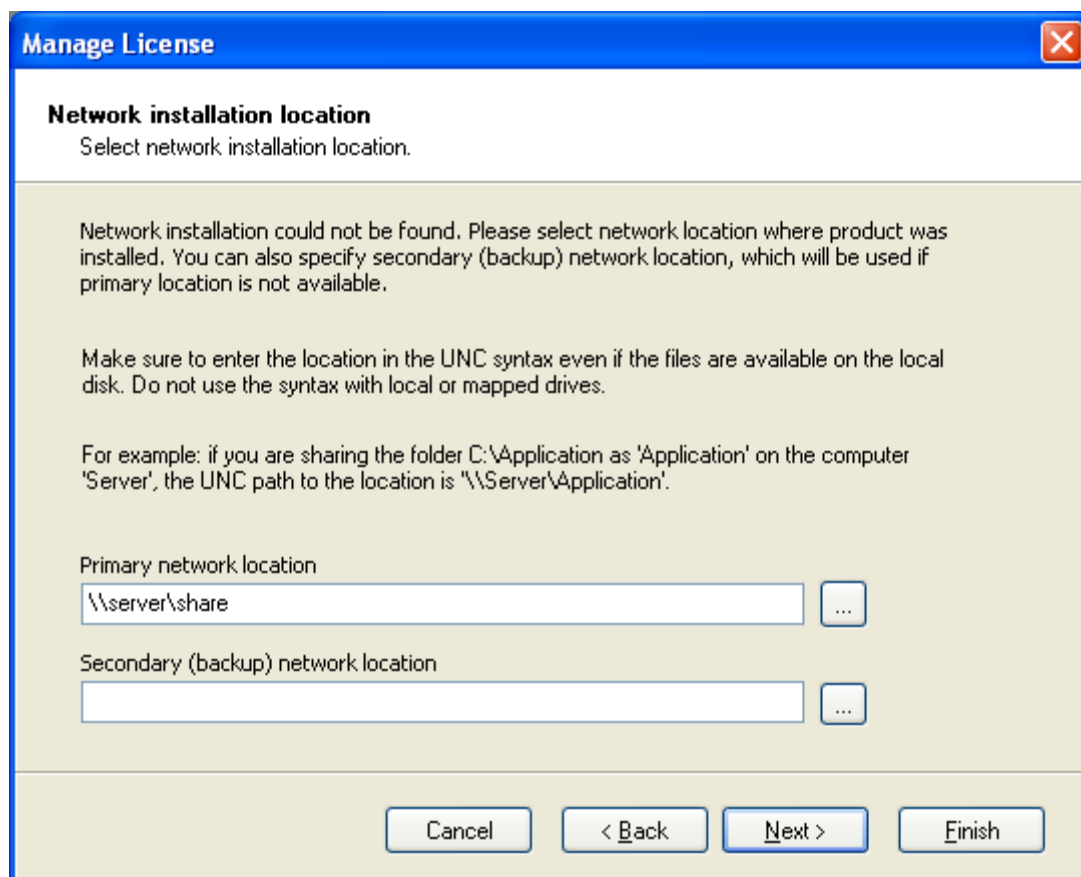
1. After you have installed the server and client parts of the NiceLabel network edition, run the NiceLabel software from your server computer. No valid license is found. Click on the button **Manage License**.
2. Select **Network Software Key** and click on **Next**.



Selecting 'Network Software Key' activation

3. The primary network location path should be the same as the one entered at installation (see the chapter **Install NiceLabel Software on the Server**) and click on **Next**.

Note: Make sure you are using UNC syntax when referring to the network location. Use the syntax `\\server\share\file` and not the syntax with the mapped drive like `W:\share\file`.



Entering Primary Network Location

4. Enter the required customer information and the key number and click on **Next**.
5. To activate the software automatically, click on the link **Connect to the Activation server** (recommended).
6. To activate the software manually, click on the provided Internet link for Web page activation. Your Internet browser will open the NiceLabel *Network Key Number Activation* Web site.
 - a. Enter the key number and the registration number. Enter other user information, if prompted.
 - b. Click on the **Activate** button to retrieve the Activation code.
 - c. Copy the Activation code and paste it in the field **Activation Code** in the open *Manage License – Activation code* window of the open NiceLabel software.

Manage License

Activation Code
Enter activation code.

Please enter software activation code.

Key Number
N5GB7 GP5NB BNWBB VVDNB X6F7G

Registration Number
ZAS65 AS6U5 F4AQA USJAC USJRU

Activation Code
|

If your computer is connected to the internet, you can select the automatic activation link.

Activation Code can also be acquired through the publisher's Activation Web page.

Automatic activation: [Connect to the Activation server](#)

Web page activation: http://www.nicelabel.com/nlactivation_netdlp.html

Cancel < Back Next > Finish

Validating the key number

- Click on the **Next** button and follow the prompts to complete the activation process.

Note: You can still activate the NiceLabel software if the computer does not have access to the Internet.

If the computer where you installed NiceLabel software does not have Internet access, do the following:

- Follow the steps one (1) to four (4) from the previous section.
- Write down the Key number and the Registration number.
- Write down the Internet activation Web address.
- Go to a computer with Internet access and open the activation Web site in the Internet Explorer.
- Enter the Key number and the Registration number. Enter other user information when prompted.

Network Activation

Welcome to the NiceLabel activation site. Please copy the data from your NiceLabel activation dialog box into the fields below. Then press the ACTIVATE button.

Key Number: - - - - *

Registration Number: - - - - *

Name: *

Company: *

Address 1:

Address 2:

Zip: City:

Country: *

E-mail: *

* - required

Internet activation web site

6. Click on the **Activate** button to retrieve the Activation code. Write it down.

Note: The Key and Registration numbers, the Activation code and information in other fields are case sensitive, so be careful when writing down the numbers.

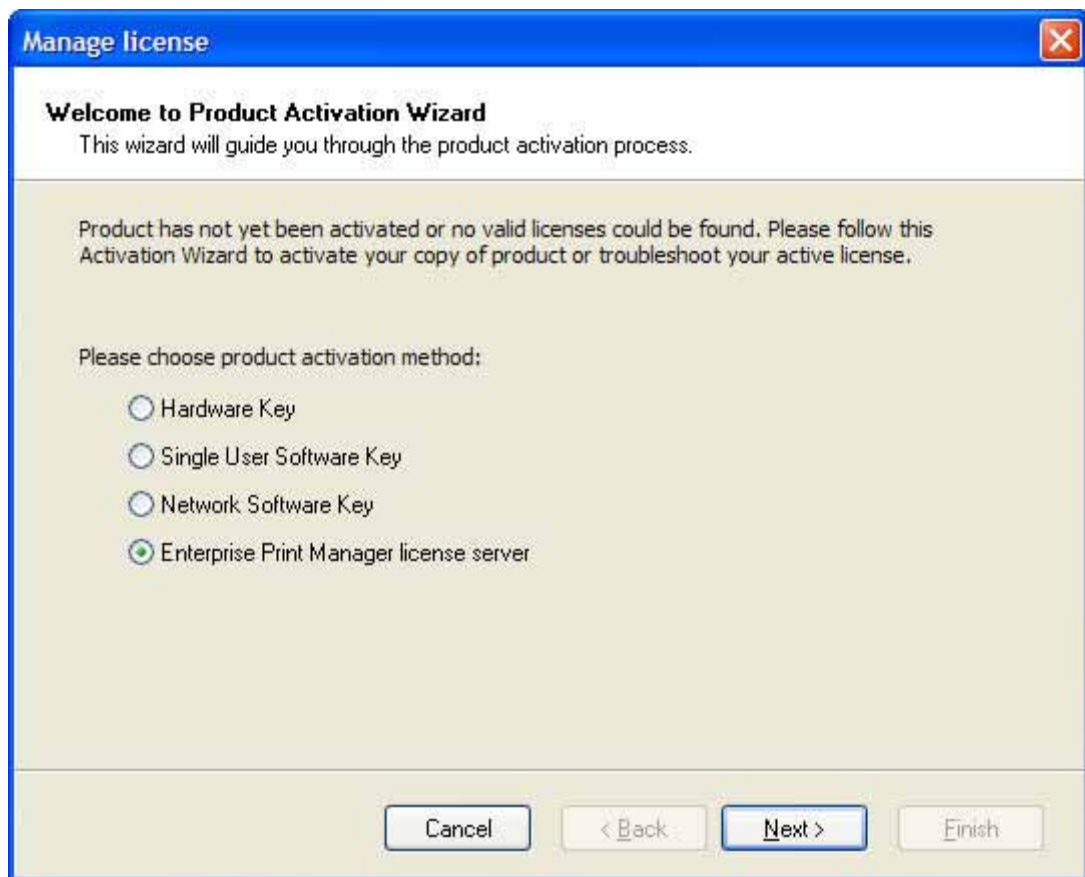
7. Go back to the NiceLabel computer where the window *Manage License* is still open.
8. Enter the Activation code.
9. Click on the **Next** button and follow the prompts to complete the activation process.

2.4.4 Activate Software with License from Enterprise Print Manager

Enterprise Print Manager (EPM) is a component of the NiceLabel Print Center edition. EPM stores the NiceLabel client licenses in its license server.

To activate the NiceLabel client with a license from EPM, do the following:

1. After the installation of NiceLabel client is complete, run NiceLabel Pro. The *Warning* window will open.
2. Click on **Manage License**. The *Manage License* window will open.
3. Select **Activate the package** and click on **Next**.



Selecting "Enterprise Print Manager license server" activation

4. Select **Enterprise Print Manager license server** and click on **Next**.
5. Enter the name of the Windows server where NiceLabel EPM is installed, click on **Next**.

If the license from the EPM is successfully obtained, the NiceLabel client log settings will be changed to send all log information to a central location in the EPM.

Note: When you use license from EPM, the log data can be stored only on the EPM, only in the local Access database, or combined on

both locations. To change the log settings open **Tools -> Options** and make the change.

If your NiceLabel Print Center is not already activated, no licenses are available in the EPM. Before you can activate NiceLabel clients with licenses from the EPM, you must activate the NiceLabel Print Center. Have your 25-character Activation Software Key ready and follow on-screen instructions or refer to the NiceLabel Print Center User Guide.

2.4.5 Activate Additional Network Clients

The Network client you have used for activation of the NiceLabel Network server is activated automatically. To activate additional NiceLabel Network clients on other workstations please follow these steps:

1. Install NiceLabel Suite on the workstation.
2. Open the NiceLabel software. No valid license is found and the window *Manage License* opens.
3. Select *Network Software Key* and click on **Next**.

Manage License

Network installation location
Select network installation location.

Network installation could not be found. Please select network location where product was installed. You can also specify secondary (backup) network location, which will be used if primary location is not available.

Make sure to enter the location in the UNC syntax even if the files are available on the local disk. Do not use the syntax with local or mapped drives.

For example: if you are sharing the folder C:\Application as 'Application' on the computer 'Server', the UNC path to the location is '\\Server\Application'.

Primary network location
 ...

Secondary (backup) network location
 ...

Cancel < Back Next > Finish

Locating the NiceLabel Network licenses

4. Browse for the location where the NiceLabel Network was installed and click on the **Next** button.

The license information will be copied from the server.

Note: Make sure you are using UNC syntax when referring to the network location. Use the syntax `\\server\share\file` and not the syntax with the mapped drive like `W:\share\file`.

The NiceLabel Network client is activated. The full NiceLabel version can only run on the workstation if the NiceLabel server has enough licenses available. If no license is available, you can only work with the NiceLabel Demo Mode and have to wait until one of the client currently running NiceLabel logs off.

2.5 NiceLabel Demo Mode

The demo mode is enabled when you do not activate NiceLabel after the installation. The demo mode of the NiceLabel software has limited functionality. The major limitations are:

- You can only print five (5) labels per print job.
- You can only define one (1) variable field on the label you want to export (to Pocket NiceLabel, to SAP, to printer's memory or using other export possibilities).
- Random characters will replace the data values of label objects.
- If you continue running NiceLabel software in the demo mode, you will experience increasing delay at startup.

To change from demo mode to full functionality without limitations, you have to activate your NiceLabel software.

2.6 Installing NiceLabel Upgrades

You can upgrade the NiceLabel software in the following ways:

- Upgrade software within one version (minor version upgrade), for example from **5.0.0** to **5.1.0**.
- Upgrade software version from an older version to the most current one (major version upgrade), for example **4.1.0** to **5.0.0**.

- Upgrade software edition, for example NiceLabel Pro to a more advanced edition like NiceLabel Suite.

2.6.1 Install NiceLabel Minor Version Upgrade

In a NiceLabel software minor version upgrade, you upgrade an older minor version, for example NiceLabel **5.0.0**, to the latest version of **5.x.x**. Before you upgrade your NiceLabel software, make sure you

- Backup your NiceLabel files.
- Do not remove the existing version from your desktop PC.
- Check what NiceLabel edition you have.

Note: To check your NiceLabel edition, look at the label on your CD case or open the NiceLabel software and go to Help/About.

To upgrade your NiceLabel **stand-alone/ single user** software (minor version upgrade), do the following:

1. Close the NiceLabel software on your desktop PC.
2. Disable your Virus Scan software.
3. Install the new minor version in the same folder where the old version is currently installed. The new version will replace the old one.
4. Follow the prompts.

2.6.2 Install NiceLabel Major Version Upgrade

In a NiceLabel software major version upgrade, you upgrade an older version, for example NiceLabel **4.x.x**, to the latest version of **5.x.x**. Before you upgrade NiceLabel software, make sure you

- Backup your NiceLabel files.
- Do not remove the existing version from your desktop PC.
- Check what NiceLabel edition you have.

Note: To check your NiceLabel edition, look at the label on your CD case or open NiceLabel software and go to Help/About in the menu.

To upgrade your NiceLabel **stand-alone/ single user** software (major version upgrade), do the following:

1. Close NiceLabel and any other software on your desktop PC.
2. Disable your Virus Scan software.

Note: Make sure that all clients have logged off if you have Network edition.

3. Put the NiceLabel CD in your CD-ROM drive.
4. Install the same NiceLabel edition as you already have; for example, if you have NiceLabel Pro 4.1.x and want to upgrade to NiceLabel Pro 5.x.x, install NiceLabel Pro 5.x.x.
5. Follow the prompts.

2.6.3 Install NiceLabel Edition Upgrade

When you perform an edition upgrade, you want to upgrade to a more powerful NiceLabel edition; for example upgrade from NiceLabel Express to NiceLabel Pro or NiceLabel Pro to NiceLabel Suite. Before you upgrade your NiceLabel software, make sure you

- Backup your NiceLabel files.
- Close NiceLabel and any other software on your desktop PC.
- Do not remove the existing NiceLabel software edition.

To upgrade your NiceLabel **stand-alone/ single user** software edition, do the following:

1. Put the NiceLabel CD in your CD-ROM drive.
2. Install the new edition (Pro or Suite) on your computer. Follow the same instructions as for first-time installation. Refer to the chapter **Installing NiceLabel Software**.
3. Follow the prompts.

Note: Activate the new edition of the NiceLabel software when you have received the activation document from your vendor with the upgrade package. You won't be able to use the new edition until you have activated it.

2.7 Installing NiceLabel Network Upgrades

You can upgrade the NiceLabel Network software in the following ways:

- Upgrade software within one version (minor version upgrade), for example from **5.0.0** to **5.1.0**.
- Upgrade software version from an older version to the most current one (major version upgrade), for example **4.1.0** to **5.0.0**.
- Upgrade software from stand-alone edition (single user license) to a NiceLabel Suite Network edition with five or more concurrent users.

2.7.1 Install NiceLabel Minor Version Network Upgrade

In a NiceLabel minor version network upgrade, you upgrade an older minor version network, for example NiceLabel **5.0.0**, to the latest version of **5.x.x**. Before you upgrade your NiceLabel software, make sure you

- Backup your NiceLabel files.
- Do not remove the existing version from your server and workstations.

Note: To check your current NiceLabel version, look at the label on your CD case or open the NiceLabel software and go to Help/About.

To install a new minor version of NiceLabel on the server and on the workstations, do the following:

1. Close NiceLabel and any other running software on your server and workstations.
2. Disable your Virus Scan software.
3. Put the NiceLabel CD in your CD-ROM drive on any computer with a NiceLabel client installed.

Note: Make sure that all clients have logged off before you install the latest NiceLabel Network minor version upgrade.

4. Install the new version on the server computer. Follow the same instructions as for the first-time installation. Refer to the chapter **Install NiceLabel Software on the Server**.

5. Install the new version on all workstations. Follow the same instructions as for first-time installation. Refer to the chapter **Install NiceLabel Software on the Workstation**.

2.7.2 Install NiceLabel Major Version Network Upgrade

In a NiceLabel major version network upgrade, you upgrade an older network version, for example NiceLabel 4.x.x, to the latest version of 5.x.x. Before you upgrade NiceLabel software, make sure you

- Backup your NiceLabel files.
- Leave the existing network version on your server and workstations.

Note: To check your current NiceLabel version, look at the label on your CD case or open NiceLabel software and go to Help/About.

To upgrade your NiceLabel software (major version upgrade), do the following:

1. Close NiceLabel and any other running software on your server and workstations.
2. Disable your Virus Scan software.

Note: Make sure that all clients have logged off before you install the latest Network version.

3. Install the new version on the server computer. Follow the same instructions as for the first-time installation. Refer to the chapter **Install NiceLabel Software on the Server**.
4. Install the new version on all workstations. Follow the same instructions as for first-time installation. Refer to the chapter **Install NiceLabel Software on the Workstation**.

2.7.3 Install NiceLabel Network Upgrade from Single User Edition

When you perform a network upgrade from a single user edition, you want to upgrade for example from a NiceLabel Pro stand-alone/ single user edition to a NiceLabel Suite Network edition. Before you upgrade your NiceLabel software, make sure you

- Backup your NiceLabel files.
- Remove the existing NiceLabel software edition from your desktop computer.

To upgrade your NiceLabel software edition, do the following:

1. Put the NiceLabel CD in your CD-ROM drive.
2. Disable your Virus Scan software.
3. Install the new network edition on the server computer. Follow the same instructions as for the first-time installation. Refer to the chapter **Install NiceLabel Software on the Server**.
4. Install the new network edition on all workstations. Follow the same instructions as for first-time installation. Refer to the chapter **Install NiceLabel Software on the Workstation**.

2.8 Activating NiceLabel Upgrades

2.8.1 Activate NiceLabel Minor Version Upgrade

When you upgrade to a new minor version of NiceLabel of the same edition, for example NiceLabel Pro version 5.x.1 to NiceLabel Pro version 5.x.2, the software will remain activated. Just make sure you install the new version in the same folder as the existing version. Please follow the same instructions as described in the chapter **Install NiceLabel Minor Version Upgrade**.

Note: For the **network edition** make sure to install the server part in the same folder on the server that is currently used for NiceLabel Network. You will not have to activate the NiceLabel server again. It will remain activated from the previously installed build.

2.8.2 Activate NiceLabel Major Version Upgrade

When you upgrade to a new major version of NiceLabel of the same edition, for example NiceLabel Pro version 4.1.x to NiceLabel Pro version 5.x.x, you will have to activate the software again. The new version does not override the existing one and you can work with both the old and new NiceLabel version of the same edition. Please follow the same instructions

as for the first-time installation of NiceLabel in the chapter **Installing NiceLabel Software**.

Summary of required steps:

1. Close running NiceLabel applications.
2. Do not remove the existing version of NiceLabel software.
3. Install the new NiceLabel version of the same edition you already have.
4. If your NiceLabel software (old version) has a hardware key (USB or Parallel, see chapter **Activating NiceLabel Software**), plug the key in your computer.
5. Activate the new NiceLabel version with the upgrade key number.

Note: To upgrade your NiceLabel software version **4.1.x** to NiceLabel version **5.x.x**, you need to have available both the old 25-digit serial number (for version 4.1.x) and the new 25-digit software key number (for version 5.x.x). Both keys are required to activate your NiceLabel upgrade.

To activate the new NiceLabel version, do the following:

1. Open the newly installed NiceLabel software version. A *Warning* window will open.
2. Click on the **Manage License** button. The *Manage License* window will open.

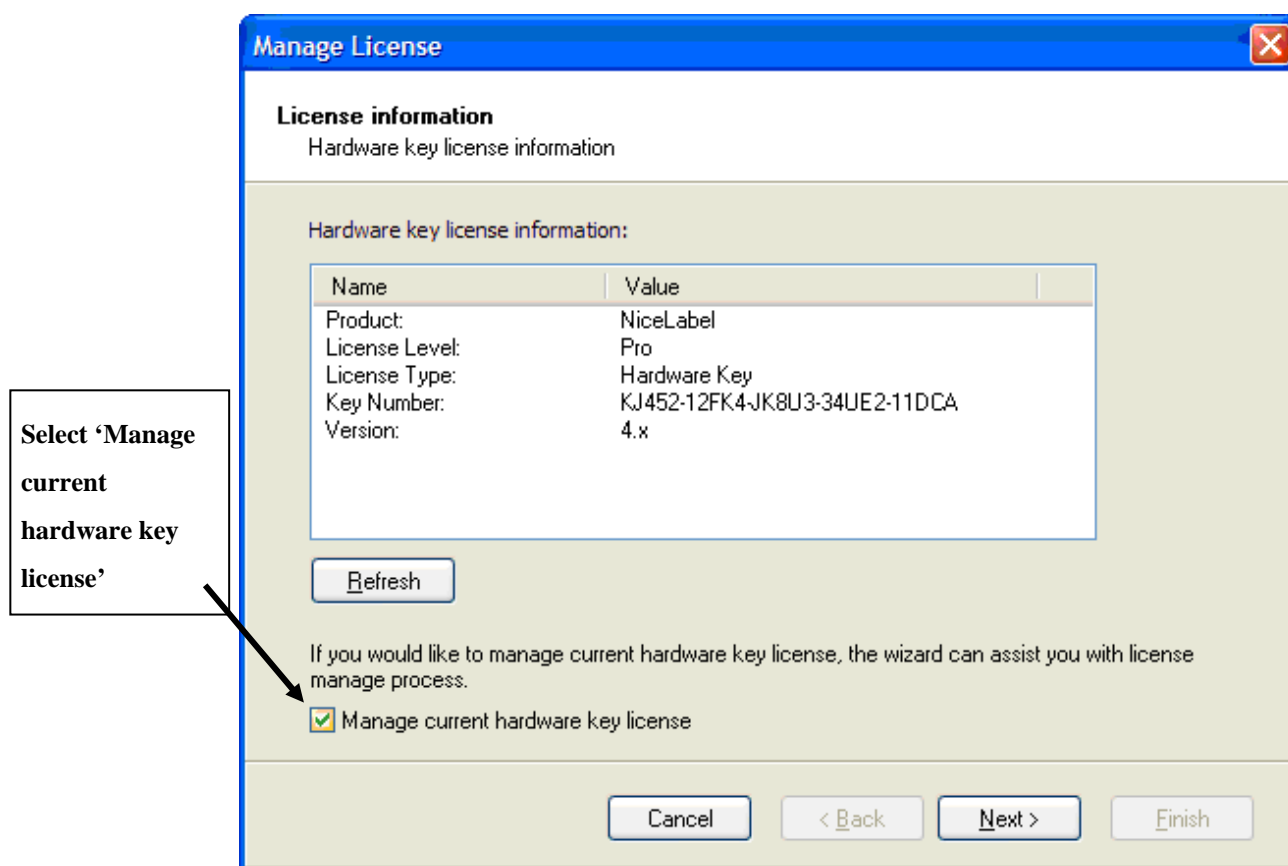
Note: If you activate NiceLabel immediately after completing the installation, select **Activate the package** and click on **Next**.

3. Select **Single User Software Key** and click on **Next**. A new *Manage License* window will open showing the key license information of your old NiceLabel version.

Note: If your old NiceLabel software came with a USB or Parallel key, plug the key into an available port, select **Hardware Key** and click on **Next**.

4. If your NiceLabel software is protected by a software key, select **Manage current software key license** and click on **Next**.

If your NiceLabel software is protected by a hardware key, select **Manage current hardware key license** and click on **Next**.



Selecting 'Manage current software key license'

5. In the *Manage License – Manage software key license* window, select **Upgrade key license** and click on **Next**.
6. In the *Manage License – Upgrade code* window, enter the **Upgrade Key Number** you received from your vendor.
7. To activate the software automatically, click on the link **Connect to the Activation server** (recommended).
8. To activate the software manually, click on the provided Internet link for Web page activation. Your Internet browser will open the NiceLabel *Upgrade Activation* Web site.
 - a. Enter user information and click on **ACTIVATE**. A new window will open with the generated Activation Code.
 - b. Copy the Activation code from the Web site and paste it in the field **Activation Code** in the open *Manage License – Activation code* window of the open NiceLabel software.

Entering Upgrade Key Number

9. Click on the **Next** button and follow the prompts to complete the activation process.

Note: You can still activate the NiceLabel software if the computer does not have access to the Internet. Please refer to the chapter **Activate NiceLabel Single User Edition**.

2.8.3 Activate NiceLabel Edition Upgrade

When you upgrade to a new edition of NiceLabel software, for example from NiceLabel Express to NiceLabel Pro or NiceLabel Pro to NiceLabel Suite, you keep the existing NiceLabel edition on your computer and install and activate the new NiceLabel edition. Please follow the same instructions as for the first-time installation of NiceLabel in the chapter **Installing NiceLabel Software**. To activate the new NiceLabel software edition, follow the activation instructions discussed in the chapter **Activating NiceLabel Major Version Upgrade**.

Note: To upgrade your NiceLabel software edition, you need to have available the old serial number/ software key and the new 25-

digit software key number. Both keys are required to activate your NiceLabel upgrade.

Summary of required steps:

1. Close all NiceLabel applications.
2. Install the new NiceLabel edition.
3. Activate the new NiceLabel edition with the upgrade key number.

2.8.4 Activate NiceLabel Network Major Version Upgrade

In a NiceLabel major version network upgrade, you upgrade an older network version, for example NiceLabel 4.x.x, to the latest version of 5.x.x.

Summary of required steps:

1. Backup your NiceLabel files.
2. Leave the existing network version on your server and workstations.

Note: To check your current NiceLabel version, look at the label on your CD case or open NiceLabel software and go to Help/About.

3. Install the new version on the server computer. Follow the same instructions as for the first-time installation. Refer to the chapter **Install NiceLabel Software on the Server**.
4. Install the new version on all workstations. Follow the same instructions as for first-time installation. Refer to the chapter **Install NiceLabel Software on the Workstation**.
5. Activate the new NiceLabel version with the upgrade key number.

Note: To upgrade your NiceLabel Network version 4.1.x to NiceLabel Network version 5.x.x, you need to have available both the old 25-digit serial number (for version 4.1.x) and the new 25-digit software key number (for version 5.x.x). Both keys are required to activate your NiceLabel upgrade.

To activate the new NiceLabel Network version, do the following:

1. Open the newly installed NiceLabel software version on your server or any client computer. A *Warning* window will open.

- Click on the **Manage License** button. The *Manage License* window will open.

Note: If you activate NiceLabel immediately after completing the installation, select **Activate the package** and click on **Next**.

- Select **Network Software Key** and click on **Next**. A new *Manage License* window will open showing the network installation location.
- Enter the primary network location path that should be the same as the one entered at installation (see the chapter **Install NiceLabel Software on the Server**) and click on **Next**.

Note: Make sure you are using UNC syntax when referring to the network location. Use the syntax `\\server\share\file` and not the syntax with the mapped drive like `W:\share\file`.

Entering Primary Network Location

- Enter the required customer information and the upgrade key number and click on **Next**.

6. To activate the software automatically, click on the link **Connect to the Activation server** (recommended).
7. To activate the software manually, click on the provided Internet link for Web page activation. Your Internet browser will open the NiceLabel *Upgrade Activation* Web site.
 - a. Enter the key number and the registration number. Enter other user information, if prompted.
 - b. Click on the **Activate** button to retrieve the Activation code.
 - c. Copy the Activation code and paste it in the field **Activation Code** in the open *Manage License – Enter Old Key Number* window of the open NiceLabel software.

Manage license

Old Key Number
Enter Old Key Number

Please enter old key number and upgrade activation code.

Old Key Number
LK903-093KJ-4562H-ER32T-893J6

Upgrade Key Number
RKKBA X5WKC WAK3R 3N5ZF KN5C3

Registration Number
RM6WK GDNXS YTR4H RXF2N ZKJAZ

Activation Code
[][][][][]

If your computer is connected to the internet, you can select the automatic activation link.

Activation Code can also be acquired through the publisher's Activation Web page.

Automatic activation: [Connect to the Activation server](#)

Web page activation: http://www.nicelabel.com/nlactivation_upgrade.html

Cancel < Back Next > Finish

Validating the key number

8. Click on the **Next** button and follow the prompts to complete the activation process.

Note: You can still activate the NiceLabel software if the computer does not have access to the Internet. Please refer to the chapter **Activate NiceLabel Network Edition**.

2.8.5 Activate NiceLabel Network Upgrade from Single User Edition

When you upgrade to a NiceLabel Network edition from a single user edition, for example NiceLabel Pro stand-alone/ single user edition to a NiceLabel Suite Network edition, you must remove the old stand-alone edition and install the new network edition on the server computer and on all workstations. Follow the same instructions as for the first-time installation. Refer to the chapters **Install NiceLabel Software on the Server** and **Install NiceLabel Software on the Workstation**.

To activate the new NiceLabel Network edition, follow the activation instructions discussed in the chapters **Activating NiceLabel Network Edition** and **Activating Additional Network Workstations**.

Summary of required steps:

1. Backup your NiceLabel files.
2. **Remove** the existing NiceLabel software edition from your desktop computer.
3. Install the NiceLabel Network software on your server and on the workstations.

Note: Make sure that all clients have logged off before you install the NiceLabel Network edition.

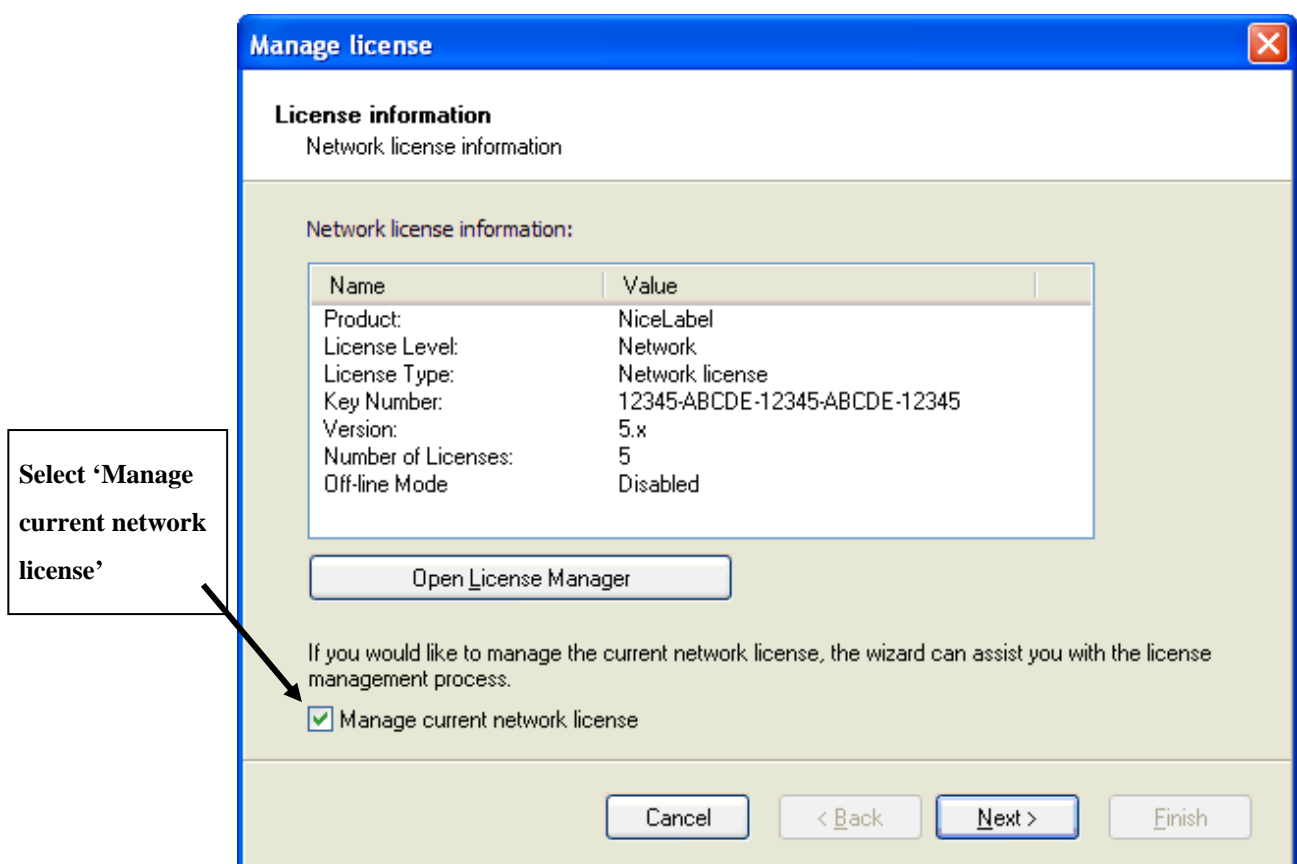
4. Activate the new NiceLabel Network edition (server and client activation) with the new network key number.

2.8.6 Activate NiceLabel Network License Pack

With a NiceLabel Network License Pack upgrade you can add user licenses to your current NiceLabel Network edition in increments of 5, 10, 20 or 50 concurrent users. To add additional network user licenses, you only have to activate your network edition with the NiceLabel Network License Pack software key you have received from your vendor.

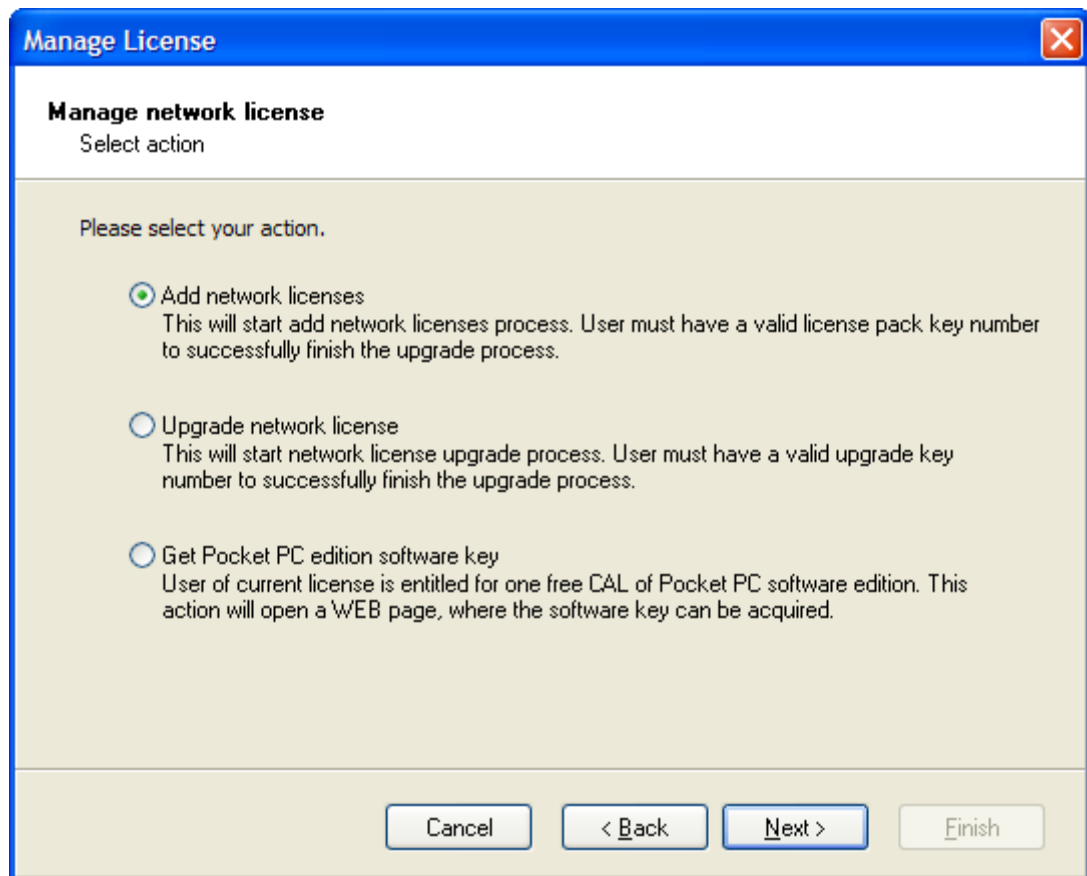
To upgrade your NiceLabel Network edition with additional user licenses, do the following:

1. Open the NiceLabel software on your server computer or any client that has installed the NiceLabel software.
2. Click on the **Manage License** button. The *Manage License* window will open.
3. Select **Manage current software key license** and click on **Next**.



Selecting 'Manage current network license'

4. In the *Manage License – Manage Network License* window, select **Add network license** and click on **Next**.



Selecting 'Add network licenses'

5. In the *Manage License – License Pack Key Number* window, enter the **License Pack Key Number** you received from your vendor.
6. To activate the software automatically, click on the link **Connect to the Activation server** (recommended).
7. To activate the software manually, click on the provided Internet link for Web page activation. Your Internet browser will open the NiceLabel *License Pack Activation* Web site.
 - a. Enter user information and click on **ACTIVATE**. A new window will open with the generated Activation Code.
 - b. Copy the Activation code from the Web site and paste it in the field **Activation Code** in the open *Manage License – Manage Network License* window of the open NiceLabel software.
8. Click on the **Next** button and follow the prompts to complete the activation process.

Note: You can still activate the NiceLabel software if the computer does not have access to the Internet. Please refer to the chapter **Activate NiceLabel Network Edition**.

2.9 Registering NiceLabel Software

At the end of the activation process, please fill out the registration form in the last step of the Product Activation process.

Registration is not required to enjoy the full working mode of the NiceLabel software. However, you should register the NiceLabel software to receive the following benefits:

- Free access to NiceLabel downloads and updates.
- Free Technical Newsletter discussing product news.
- Fast technical support.

2.10 Uninstalling NiceLabel software

To uninstall the software, open **Add or Remove Programs** in the **Control Panel**. Select the NiceLabel program in the list, and click on Remove. The NiceLabel software will be uninstalled, and you may need to use the same procedure to remove some of the standalone NiceLabel components.

Note: If you are using 2000, XP, 2003 or Vista, you have to log on as a user with administrator rights to be able to perform the uninstallation.

2.10.1 Software license key deactivation

During the uninstall procedure, you will be prompted, if you would like to deactivate your software license.

If you wish to deactivate your software license without uninstalling the software, follow these steps:

1. In the **Help** menu, click on **Manage License and open the License Manager**.

2. Check the **Manage current software key license box**, and click on **Next**.
3. Select **Deactivate License** and click on **Next**

An internet connection is required in order to connect to the activation server.

Note: This license activation will be removed from the activation server, which allows you to use the same software key to activate the software on another computer when you install the software again.

2.10.2 Hardware license key deactivation

There is no need to deactivate the hardware license key. The license is stored in the hardware key itself, so you can transfer the license to another computer simply by moving the hardware key.

2.10.3 NiceLabel Network license key deactivation

The NiceLabel Network software manages its license automatically. It retrieves the license off the server when the program is started, and returns the license when it is closed. If you wish to move the software to another computer, license deactivation is not needed, and you can simply remove the software and install it on another computer.

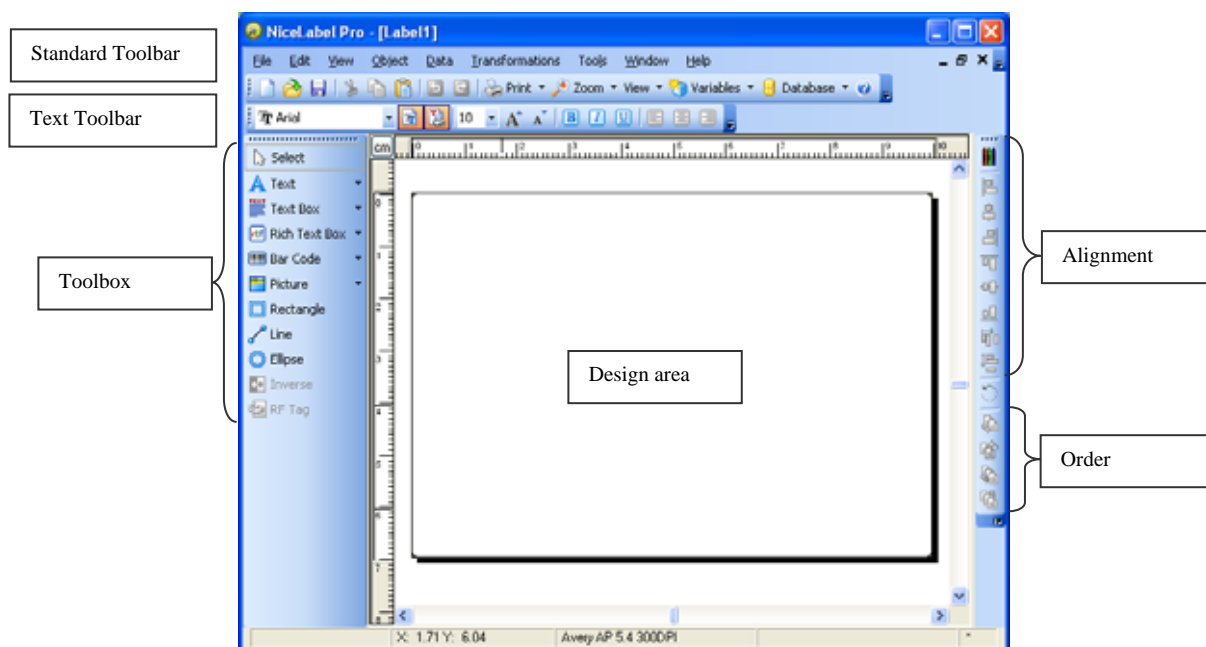
A license deactivation in NiceLabel Network applies to the server part of the software, and should only be used if you wish to move it to a new server.

3. Label Design and Printing

In this chapter you will learn how to design and print labels with NiceLabel Pro. All examples assume that you use a thermal printer and a NiceDriver.

The screenshots in this chapter show the default view on the NiceLabel user interface. You can change the interface according to your preferences. Basic mode will show only essential option in the dialog boxes and Advanced mode will make all program functionality available. You can switch between modes on-the-fly by clicking on the buttons 'Basic' and 'Advanced' in the dialog boxes or set the default mode in the NiceLabel preferences.

To start designing a label, open NiceLabel Pro. The figure below shows the default working interface of NiceLabel Pro.



NiceLabel working window

3.1 Designing a Basic Label

In this section you will learn how to design a simple label file with fixed and variable objects. The variable objects can obtain values from several sources. You will learn how to:

- a. Provide object values with a keyboard prompt.
- b. Obtain object values from a database.
- c. Preview the label on the screen.
- d. Print the label.


The label you create will look like this:



Basic label

3.1.1 Create a Basic Label

To create a basic label, do the following:

1. Open NiceLabel software (Pro or Express).
2. Select **New label** in the **File** menu or click on the icon  in the standard toolbar.

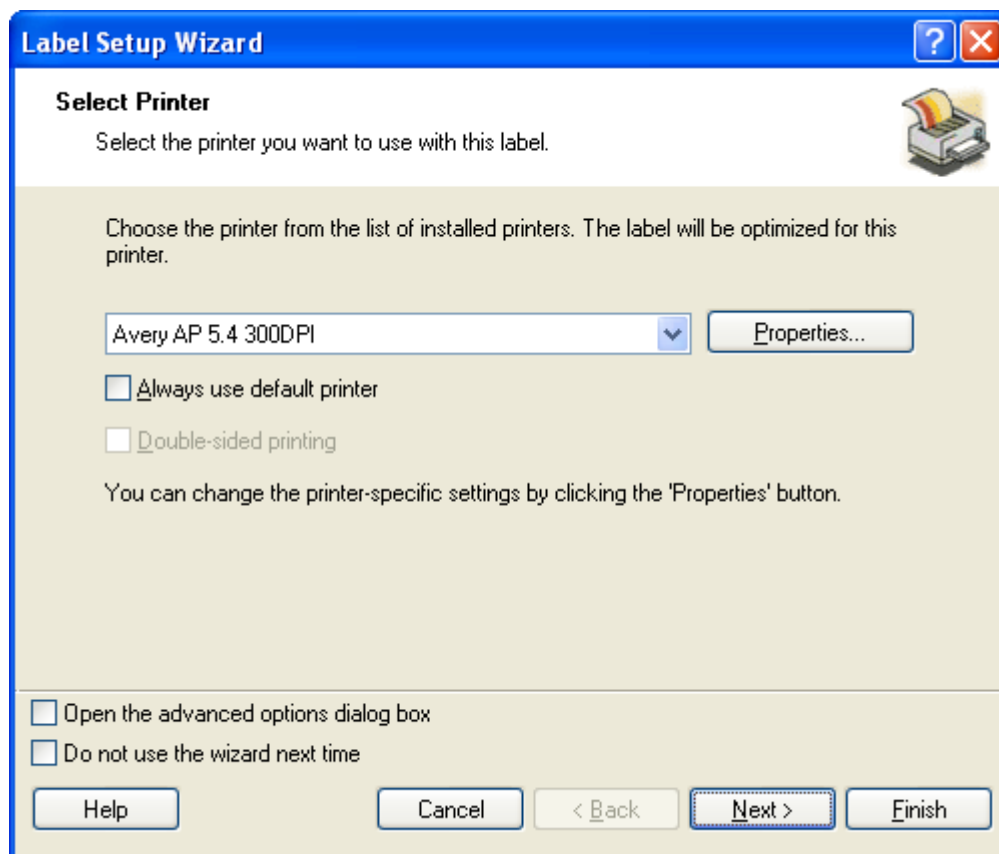
Each time you create a new label, a Label Setup Wizard will start to help you setup the label and connect to the printer.

Note: You can leave the Wizard at any time and accept the default settings for the label by clicking on the **Finish** button.

Select a Printer

1. Select the printer you want to use for label printing.

Note: If you don't find your printer on the list, refer to chapter **Install Printer Driver** for installation instructions.



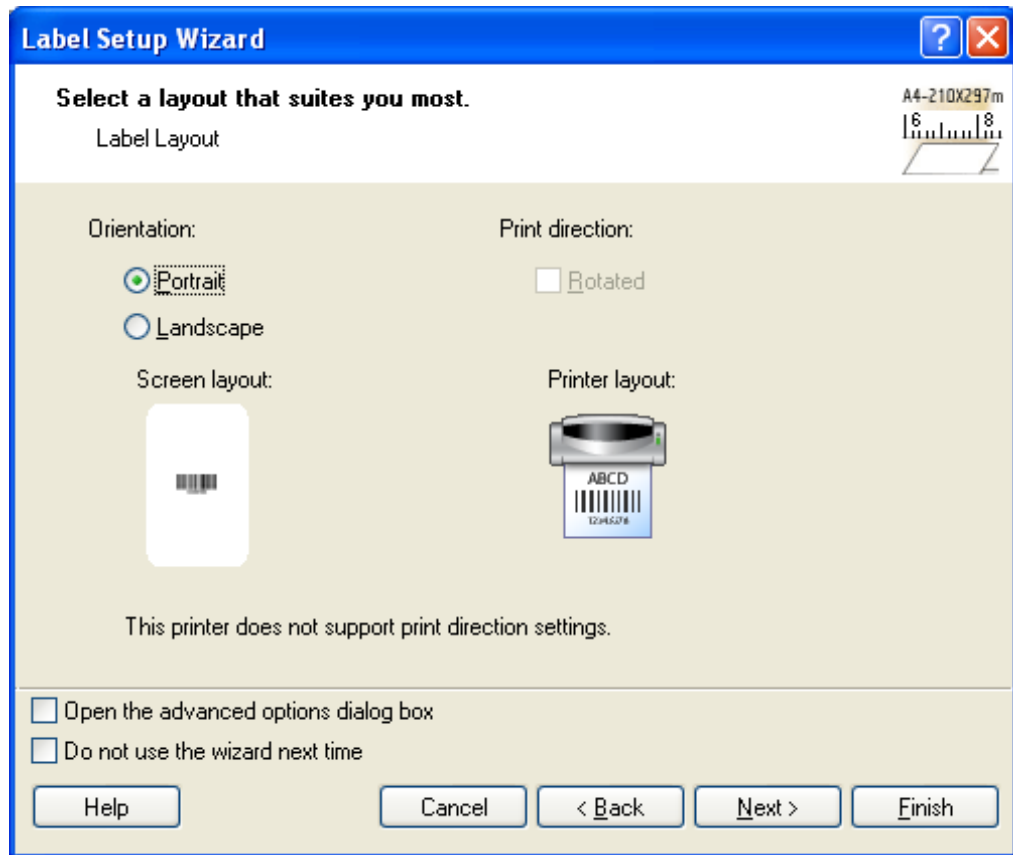
Selecting a printer

2. Click on the **Next** button.

Define Label and Page Dimensions

1. If you want to use the label stock, select your choices in the window **Select Stock**.
2. Click on the **Next** button. A new window will open to define the label dimensions manually.
3. Leave the option *Page Size* on 'User defined' default and check **Automatic Sizing**.
4. Click the Next button. A new window will open.

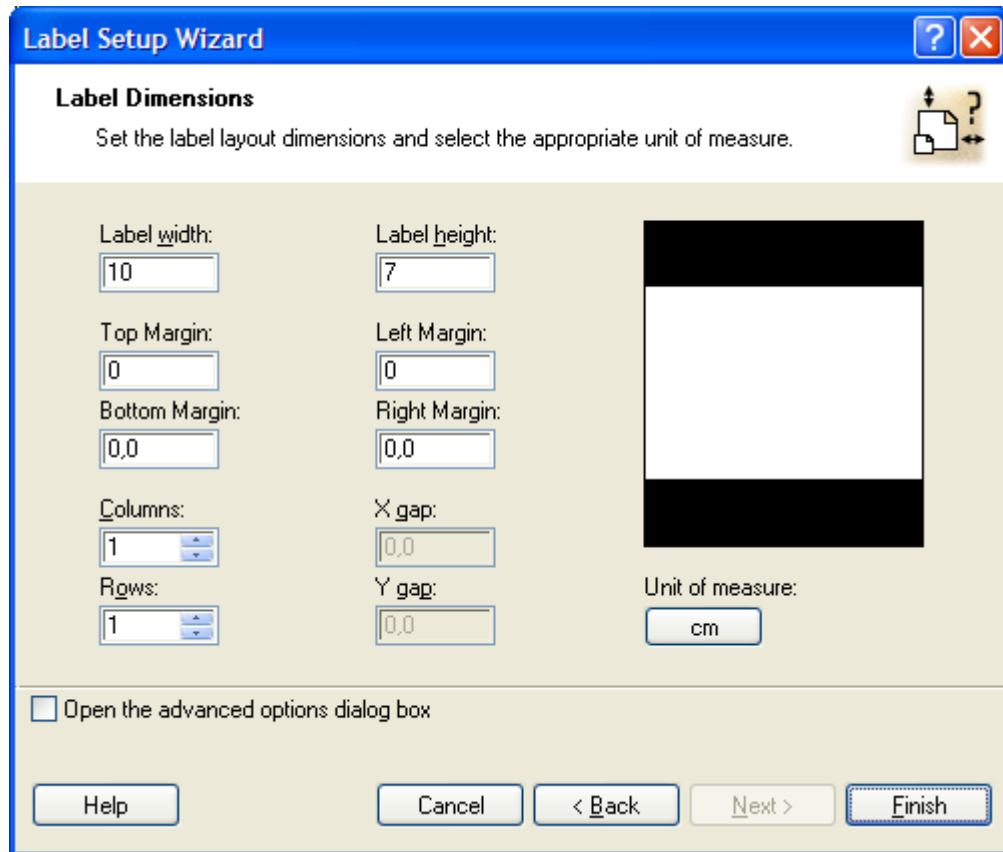
5. Select label orientation and print direction.



Selecting label layout

6. Click on the **Next** button. A new window will open.
Enter *10* for label width and *7* for label height.

Note: Dialog box differs from thermal and office printers.



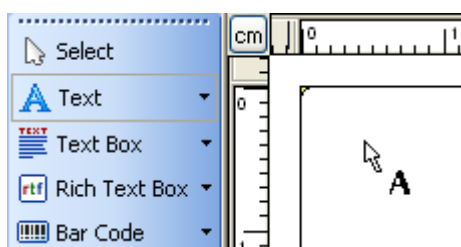
Defining label dimensions

Note: To change the unit of measure from centimeters to inches or other supported units, click on the button with unit of measure below the label preview in the dialog box.

- Click on the **Finish** button. New empty label will open.

Enter Non-Changing Text

- Click on the  **Text** button in the **Toolbox**. The text cursor appears on the screen.

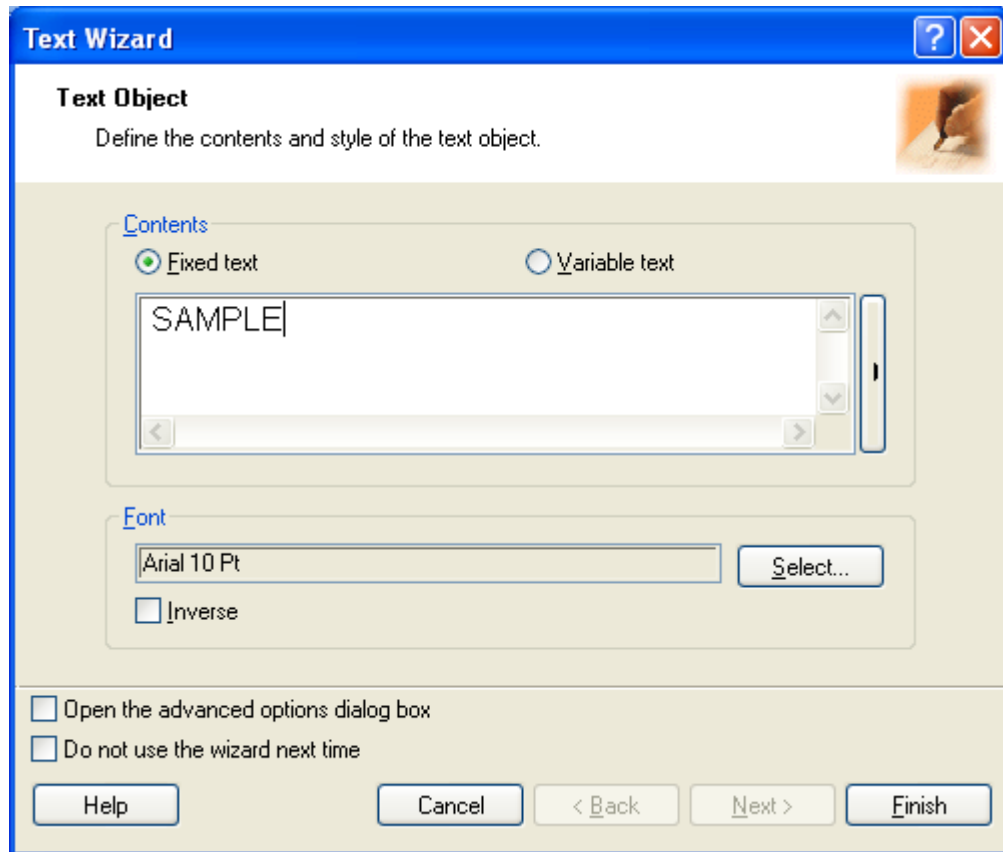


Cursor for text object

2. Move the cursor to the location on the label where you want to place the text object and click on the mouse button.

The dialog box with object properties will open.

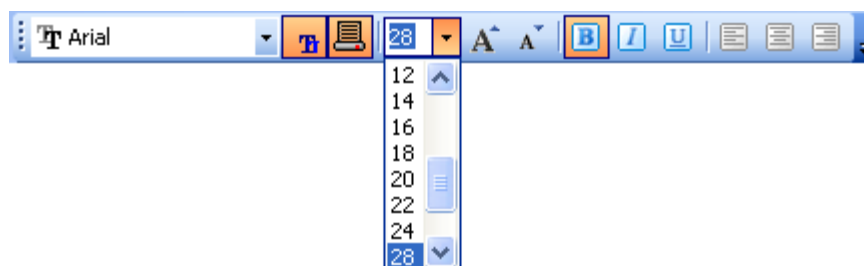
3. Enter the text "SAMPLE" and click on the **Finish** button.



Entering content for text object

4. Click on the text object to select the object.
5. Change the font for the text object using the Text toolbar.

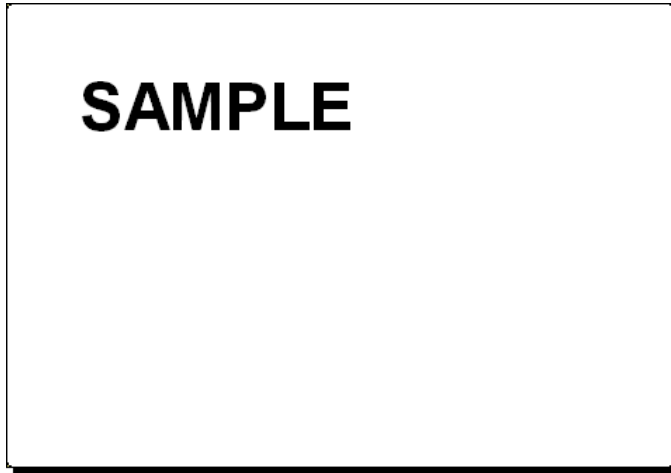
Choose Arial font, 28 point size and bold style.



Using format options in the text toolbox

6. To change the position and size of the text object, select the text object and drag object with your mouse to the position where you want to have it.


The screen should show the following:

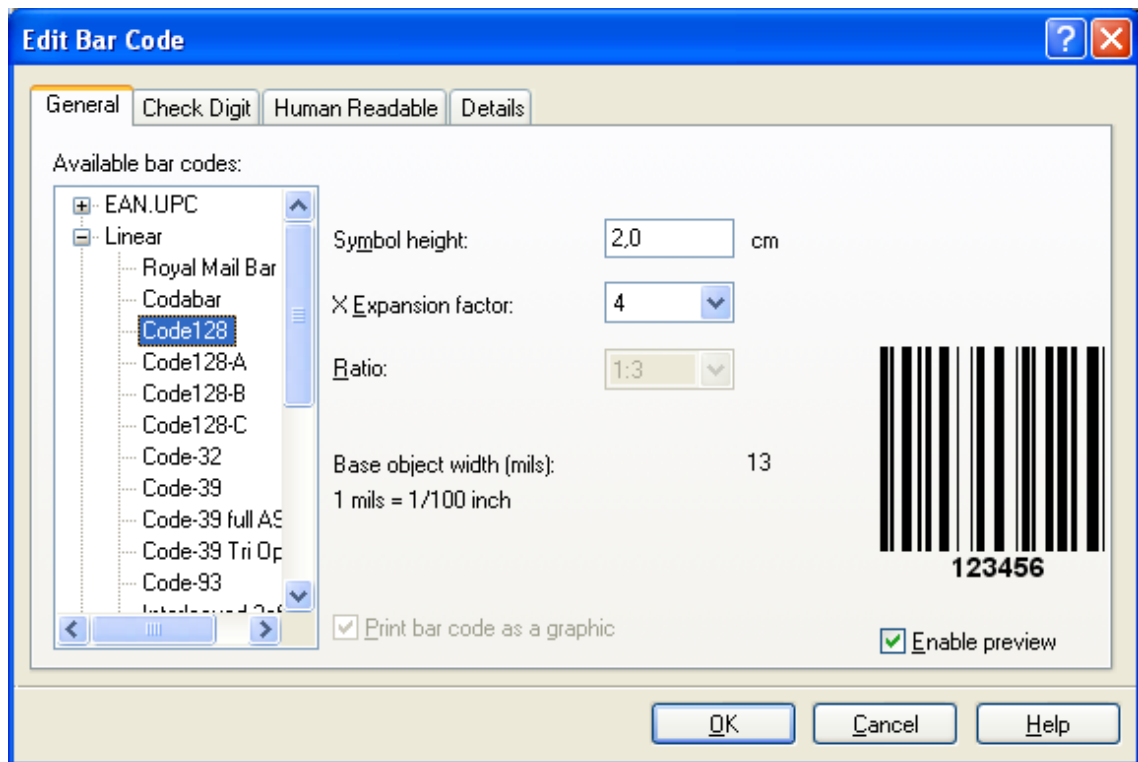


The text object is placed on the label

Insert Bar Code

Now you will add a non-changeable Code128 bar code on the label.

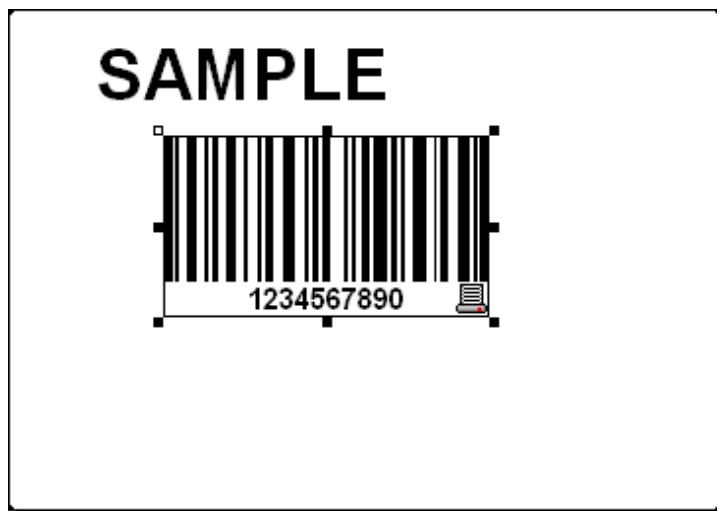
1. To insert the bar code, click on the  Bar Code button in the **Toolbox**.
2. Move the cursor to the desired position on the label and click on the mouse button.
3. The dialog box with object properties will open.
4. Enter the value 1234567890 for the bar code contents.
5. Click on the **Define** button.
Edit Bar Code dialog box opens.
6. Make sure you select bar code Code128 and click on the **OK** button.



Selecting bar code type

7. Click on the **Finish** button to return to the label.
8. Change the position of the bar code by selecting the bar code and dragging it to the desired position.
9. Change the object size by dragging the object handles. The handles are small rectangles surrounding the object when it is selected.


The label should now show the following:



Label with text and bar code objects

Insert Picture

The NiceLabel software works with BMP, PCX, GIF, WMF, JPEG and many other popular graphic formats.

1. To insert the picture, click on the  button in the **Toolbox**.
2. Move the cursor to the desired position on the label and click on the mouse button.
3. The **Open** dialog box will open allowing you to browse for your picture on your hard drive. Go to the folder Sample Graphics and select the picture LEISURE.WMF. Click on the **Open** button.


The screen should show the following:

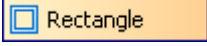


Label with text, bar code and picture objects

Use Drawing Tools

Now you will insert a line to separate a text object from other objects and a rectangle around the picture object.

1. Select the  icon from **Toolbox** and move the cursor to the required starting point of the line.
2. Press and hold down the mouse button while drawing the line. Move the mouse to the end position of the line and release the button. The Line object is placed on the label.

3. Click on the  icon in the **Toolbox** and point the mouse to the upper left corner of the picture.
4. Click and hold the mouse button while you stretch the rectangle to the lower right corner of the picture.
5. To change the thickness of the vertical and horizontal line, double-click on the rectangle object to open its properties. Select the thickness you want and click on the **Finish** button.
6. To edit the drawing object, double-click on the line or rectangle to open the dialog box with its properties.

The label should show the following:



Label with fixed objects

Use Alignment Tools

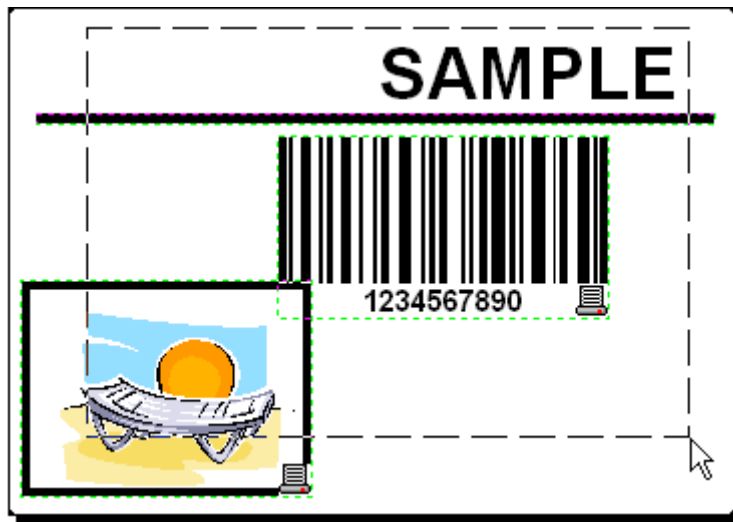
You have placed the objects on the label. Now you want to make sure they are aligned on the horizontal center of the label. You can align objects on the label by using the Align toolbar on the right side of the working window.

To align objects on the label, do the following:


1. Select all objects on the label.

Note: The first object you select determines the alignment orientation for all selected objects.

2. Choose a select arrow in the **Toolbox** and draw a frame around all objects to select all objects.



Selecting the objects on the label

3. In the Align toolbar on the right, click on the icon  to arrange the objects.


The selected objects will be rearranged and positioned on the horizontal center on the label.

Note: There are also other alignment commands available in the *Align Toolbar*.

Note: You can also align the objects to the label grid. The option *Snap to Grid* is available in the *View* menu.

Save a Label

Always save your label during the design process. To save a label, do the following:

1. Select the  icon.
2. Type in the name of the label. For example, enter 'label' for the name of the label.
3. The name of the label is visible in the program caption.

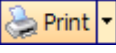


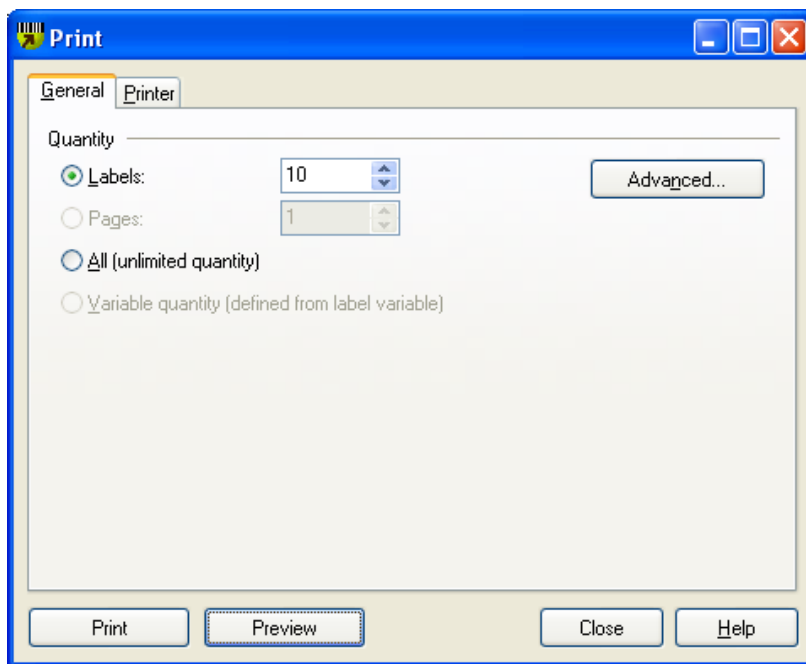
Name of the label in the program caption

Preview and Print a Label

If you want to print a label, you can use the print preview to simulate a print output. The label preview shows the label on the screen.

Simulate printing 10 labels on the screen to check label layout and printing procedure.

1. Click on  icon in the **Standard toolbar** or select the command **Print** in the *File* menu. The *Print* dialog box appears.



Print / print preview dialog box

2. Enter *10* for *Label Quantity* and click on the **Preview** button. NiceLabel software will close the dialog box and simulate the production for 10 labels on the screen.

Note: You can select between the quantity of the labels and the quantity of the pages. The page can have one or more labels and the labels are arranged on the page in columns and rows. If you have eight labels on the page, the quantity of ten pages will print 80 labels.

When you are certain that the labels will be printed correctly and the preview shows the correct values, you can proceed to real printing. To actually print the labels, do the following:

1. Click on  icon in the **Standard toolbar**. The *Print* dialog box appears.

- Enter 10 for the *Label Quantity* and click on the **Print** button. Your printer will now print 10 labels.



Note: To manage fast and easy label printing, you can print labels from the application NicePrint or the form generated with NiceForm. For more information refer to the chapter **Other NiceLabel Applications**.

3.1.2 Add Variable Fields to a Label

You may want to print the label on which the data changes for each label. NiceLabel software offers different variable fields (counters, date/time fields, operator's input from the keyboard) that you can use with text, graphics and bar code objects.

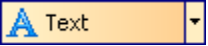
For this example a new label was created. The following steps explain how to create a label that contains a prompted field, a counter and date/time fields. The captions in the following screenshots were added separately.



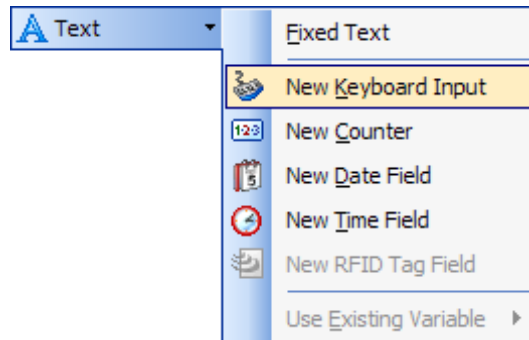
The left label shows design mode, the right two labels are two consecutive labels from print preview

Create Keyboard Entry Variable Fields

The content of a prompted field can be different for every print job. Before you print the label, you enter the value for the field.

- Click on the small arrow next to the  icon in the **Toolbox** to display a list of available variable types.
- Select **New Keyboard Input** from the list and click on the label where you want to position the object.

A dialog box with the Variable Wizard will open.




Creating new keyboard input variable field

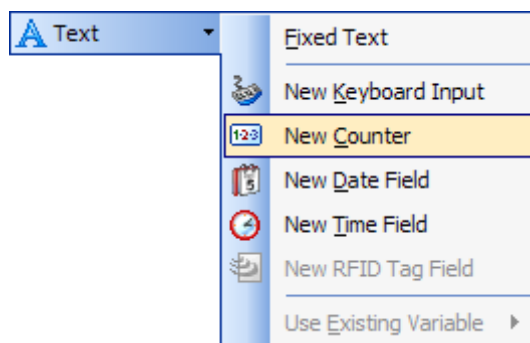
3. Type 'Enter product name' for the option *Display this text to the print operator*.
4. Click on the **Finish** button. The cursor changes its shape to an arrow with a text object.
5. Click on the label where you want to position the prompted field. The text object is placed on the label and linked to the new variable.

Note: When you print the label, you will be prompted to enter the product name, which will be shown in preview on the label and on the printed label.

Create Serialized Data Variable Fields

Now create a counter field on the label. The value of that variable field will automatically increase by one on every label.

1. Click on the small arrow next to the  icon in the **Toolbox** to display a list of available variable types.
2. Select **New Counter** from the list.
3. A dialog box with counter properties opens.



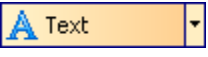
Creating new counter variable field

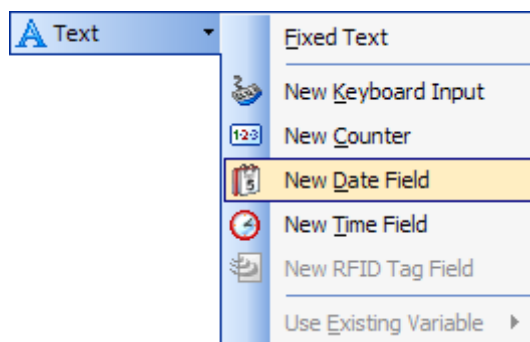
4. Leave everything as default so that the counter will always start from 1 and increase by one on each label.
5. Click on the **Finish** button.
6. Click on the label where the counter should be placed.
The new variable is linked to the text object on the label.

Note: Typically, the counter will increase by 1 on each label. For example, 1, 2, 3, 4, 5, etc. You can also define different incremental steps.

Create Date and Time Variable Fields

Content of the variable field can be filled automatically with the date or time stamp from the computer clock or printer clock (for supported printer models).

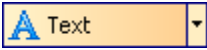
1. Click on the small arrow next to the  icon in the **Toolbox** to display a list of available variable types.
2. Select **New Date Field** from the list. A dialog box with date properties opens.



Creating new date variable field

3. Leave everything as default and the date will be used on the label using the format as defined in your Windows operating system.

To place a time stamp on the label, do the following:

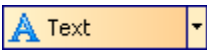
1. Click on the small arrow next to the  icon in the **Toolbox** to display a list of available variable types.
2. Select **New Time Field** from the list.
3. Click on the **Finish** button.
4. Click on the label where the time field should be placed.

The new variable is linked to the text object on the label.

The date and time fields are updated when you preview or print the label. In this example the values will come from the system clock of your computer.

Use Prefix or Suffix Options

You can add a prefix and suffix to each variable field on the label. Both are added to the value when you preview and print the label.

1. Click on the small arrow next to the  icon in the **Toolbox** to display a list of available variable types.
2. Select **New Keyboard Input** from the list.
3. A dialog box with variable properties will open.
4. Type the text 'Enter product weight' for the option *Display this text to the print operator*. Set the allowable characters to digits and click on the **Next** button.
5. Enter ' kg' for the **Suffix** option.




Defining the variable suffix

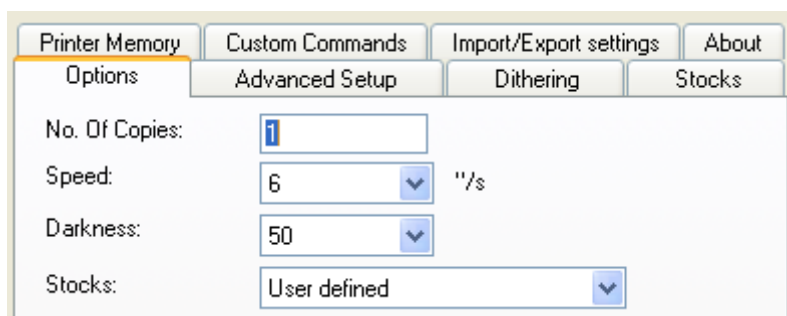
6. Click on the **Finish** button.
7. Click on the label where you want to position the prompted field. The text object is placed on the label and linked to the new variable. When you will preview or print the label, the suffix ' kg' will be appended to the entered value on the right side.

3.1.3 Change Common Printer Settings

When you start designing a label you tell NiceLabel software to what printer the label should be connected. Each label file remembers the printer settings for the selected printer driver on the label.

As an example, you will change the printing speed and darkness. To change the printer settings, do the following:

1. Go to File – Printer Settings. The window with the printer settings will open.
2. Open the Options tab.
3. Change the **Speed** and **Darkness** options.
4. Click on the **OK** button.
5. Save the label by clicking the  button in the Standard toolbar or selecting the command **Save** in the *File* menu.



Printer driver properties

Note: Any changes in the printer settings dialog box will be saved to the label and applied to future print actions.

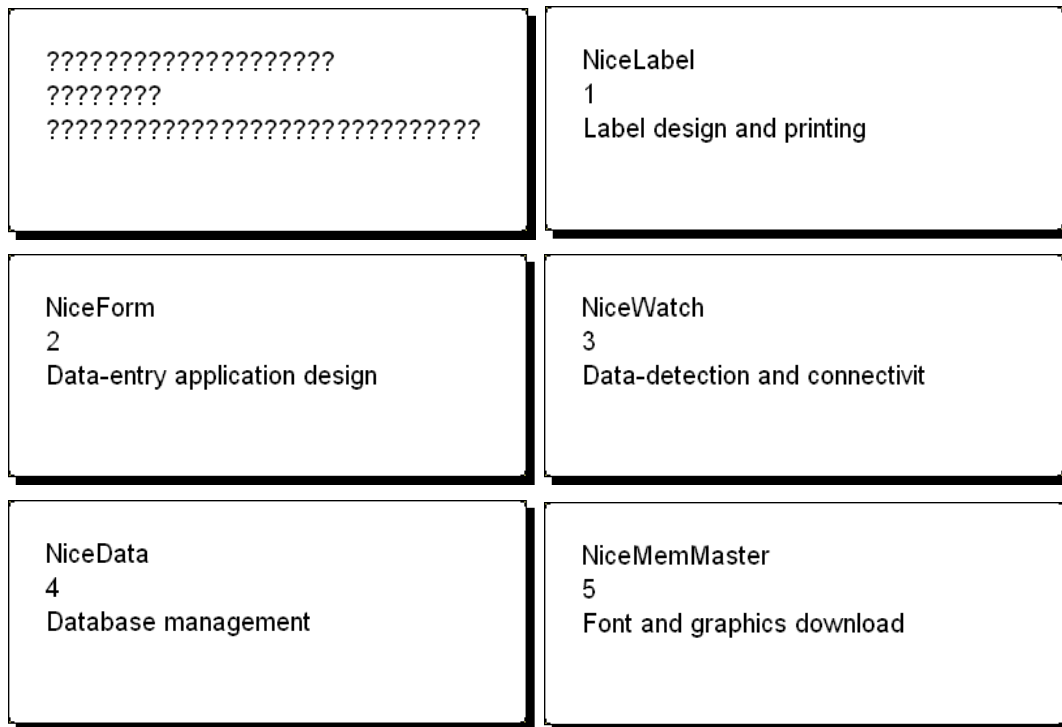
You can also change the printer settings right before the label is printed.

1. Select the **Print** option in the File menu.
2. Go to the Printer tab.
This tab allows you to change the printer just before printing begins, but it also enables you to change common printer settings like speed, darkness and print direction.

Note: Changes to the settings in the Printer tab will not be saved in the label but used only at print time.

3.2 Linking a Label to Text Databases

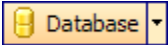
Text databases are text files containing data values that can be used for variable objects on the label. The text database is not a real database. It contains the data values but lacks the information of the data structure, name of the fields and maximum lengths of the fields. You have to provide the missing information before NiceLabel software can use the data from such a text database.

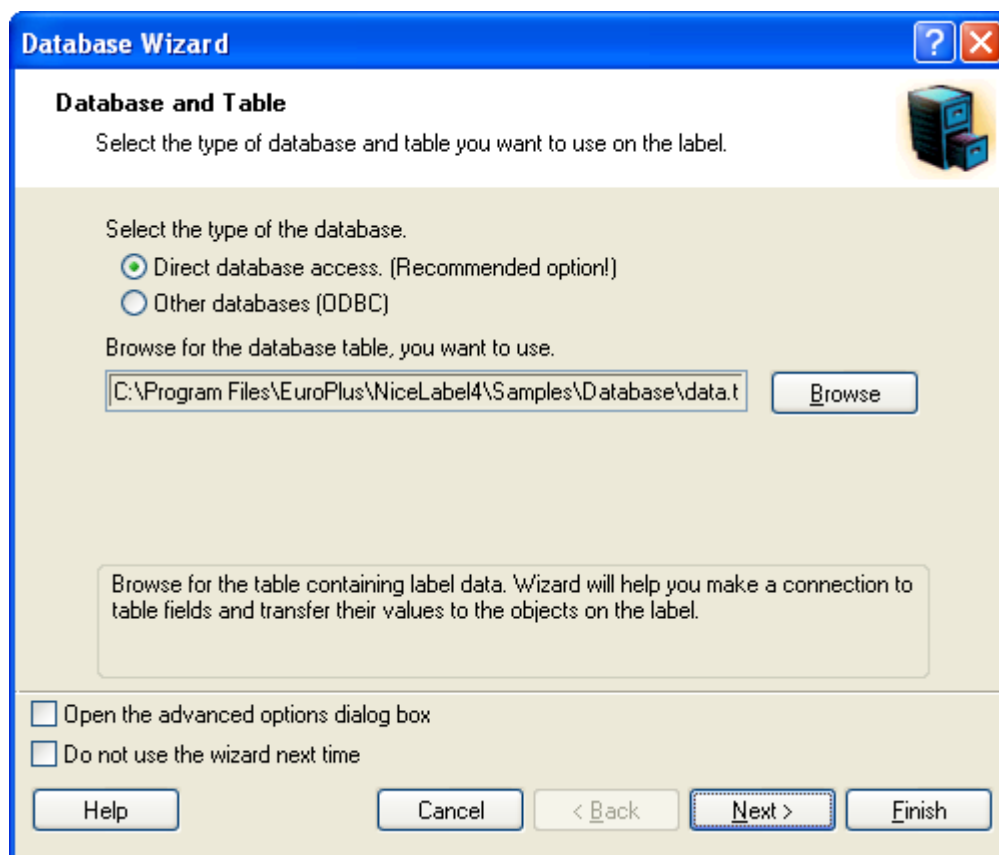


The label in design mode (on the left) and preview of the five labels with data from the database

3.2.1 Connect to a Database

NiceLabel software offers a Database Wizard that guides you through the necessary steps to connect the database to a label. To connect your label to a database using the Database Wizard, do the following:

1. Click on the  button in the Standard Toolbar.
2. Click on the **Browse** button and point to the text database "C:\Program Files\EuroPlus\NiceLabel4\Samples\Database\data.txt".



Selecting the text database

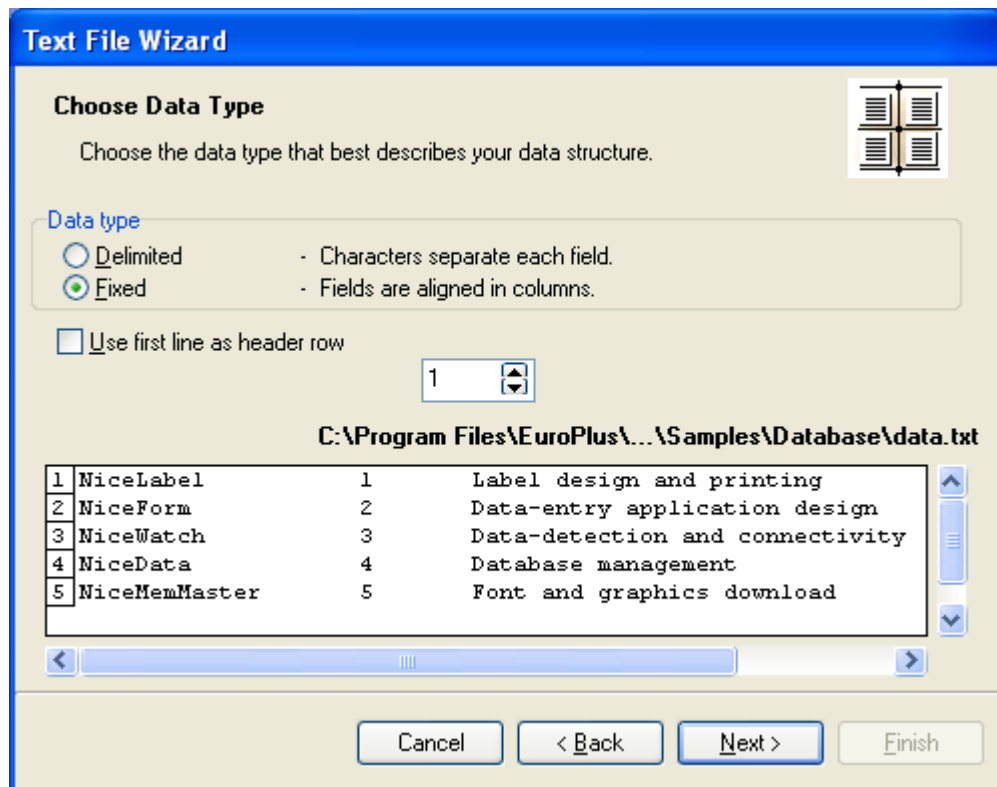
3. Click on the **Next** button.

Note: If you connect to the database for the first time, you need to define the database structure. Continue with the next section.

3.2.2 Format the Data with the Text File Wizard

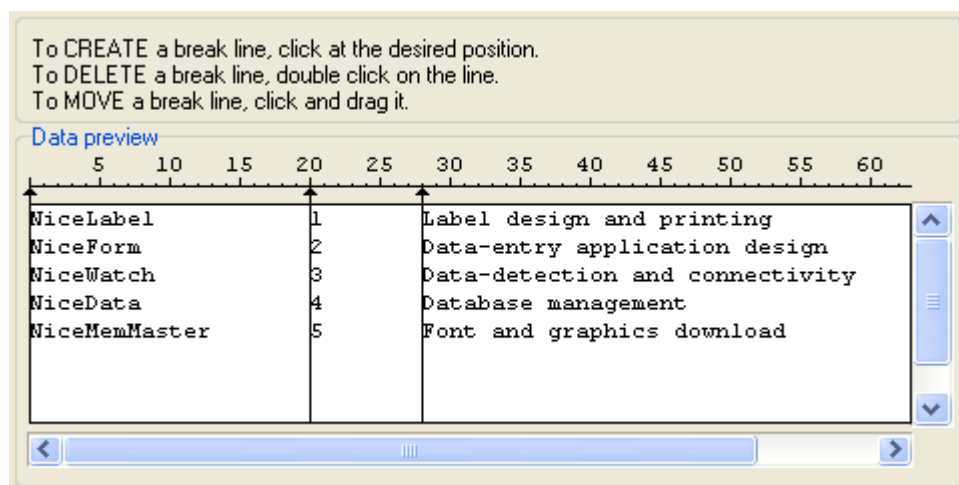
Because the text files do not contain the structural information like real databases do, you must define the fields and their data structure. When you use the same text database some other time, you won't have to define the structure again.

1. Choose the data type for the selected text database. The fields are aligned in columns, so you must select the option **Fixed**.



Defining the type of the text database

- Click on the **Next** button.
- Define the widths of the individual columns by placing a break line before the second column and before the third column.



Defining the fields in the text database

- Click on the **Next** button.
- Accept the default field names and click on the **Next** button.

6. Review the text database structure. The field names and their maximum lengths are displayed. Click on the Finish button to close Text File Wizard.

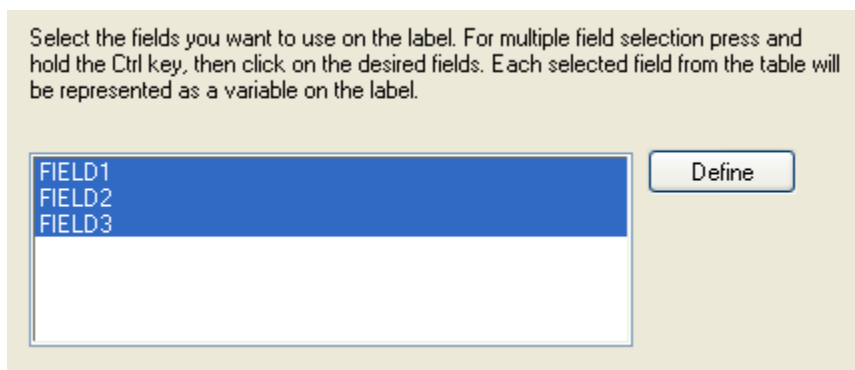
The link to the database has been created and database fields are available on the label.

NiceLabel software brings you back to the Database Wizard.

3.2.3 Place Database Fields on a Label

The next step in the Database Wizard opens the dialog box with the list of available fields from the database.

1. By default all fields from the database will be used on the label. Click on the **Next** button.



Using all fields in the text database

2. Specify what records and how many you want to print:

Select the options **I want to select which record to print** and **I will enter label quantity for each selected record**. Before printing labels, the table with the records will open and you will be able to select the records you want to print and the quantity of labels for each record.

Select which records do you want to print.

☐ I want to print all records from the table

☒ I want to select which record to print

Specify how the label quantity information is defined.

☐ Print one label for each record in the database

☐ One field in the table contains the label quantity information

☒ I will enter label quantity for each selected record

Specifying which records from the database will be printed and in what quantity

3. Click on the **Next** button.
4. Select if the Database Wizard should link all selected fields from the database to the text objects on the label or if you want to link the fields manually to the label.
5. Click on the **Next** button.
6. Select **I want a text object for each selected field** and click on the **Finish** button.

Define how you want the selected database fields to be used on the label:

☒ I want a text object for each selected field


☐ I will link the database fields to the objects myself later

Each field from the database will be linked to a text object

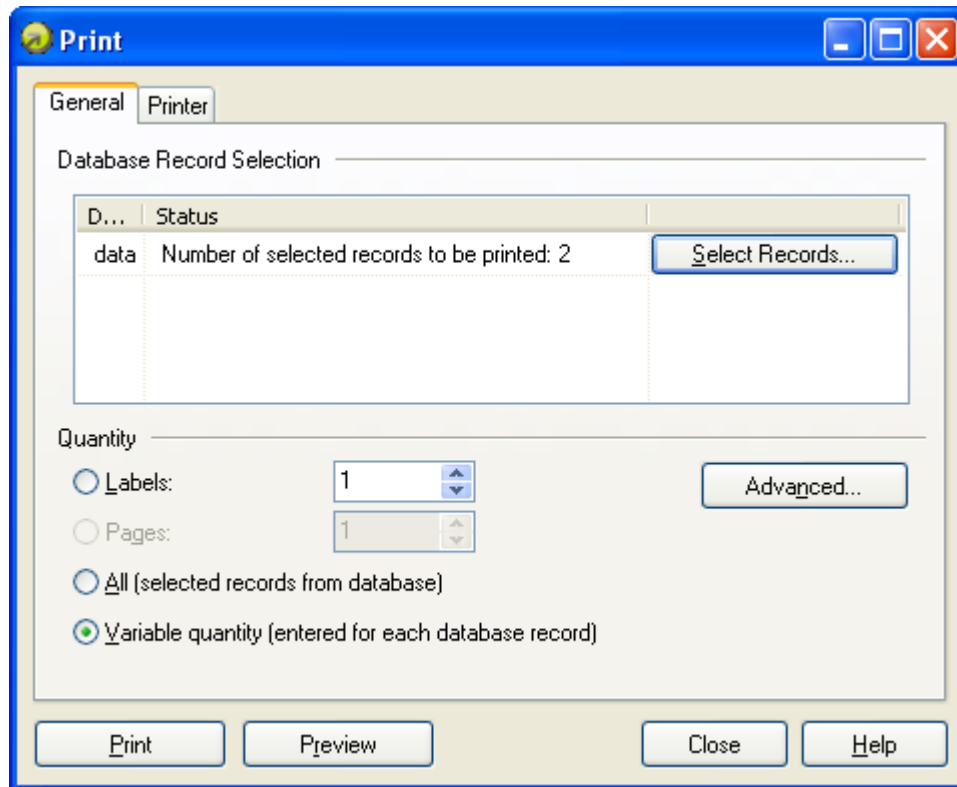
The label will show several text objects. Every field from the database is linked with the text object on the label.

3.2.4 Use Print Preview to Select Data and View a Label

Now you will simulate label printing using print preview.

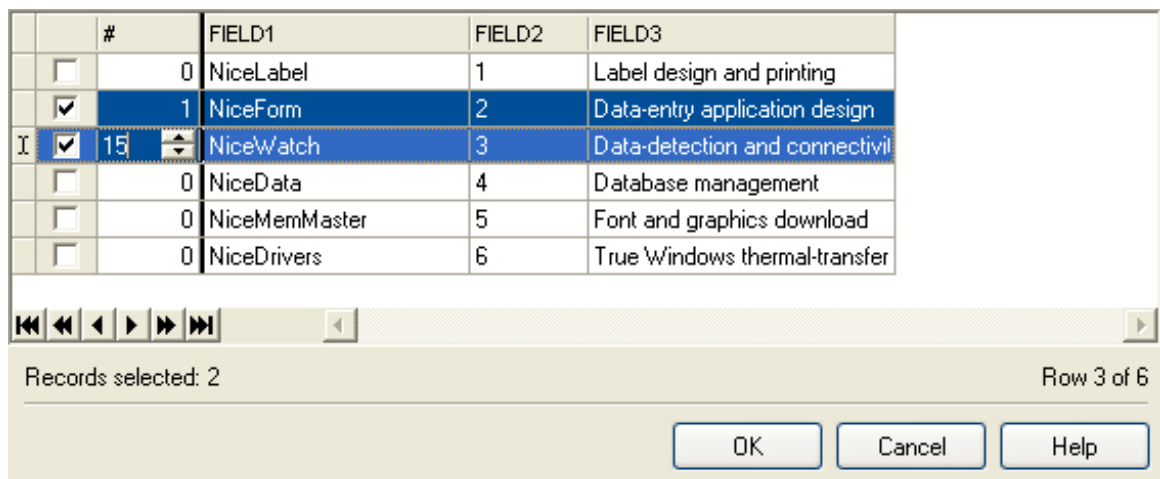
1. Click on the print icon  in the Standard Toolbar.
2. The Print dialog box opens with the Quantity of labels set to **Variable quantity (entered for each database record)**. This setting corresponds to your selection in the Database Wizard when you have selected the options **I want to select which record to print** and **I will enter label quantity for each selected record**.

Only the records you select will be printed in the defined quantity.



Print / Print preview dialog box

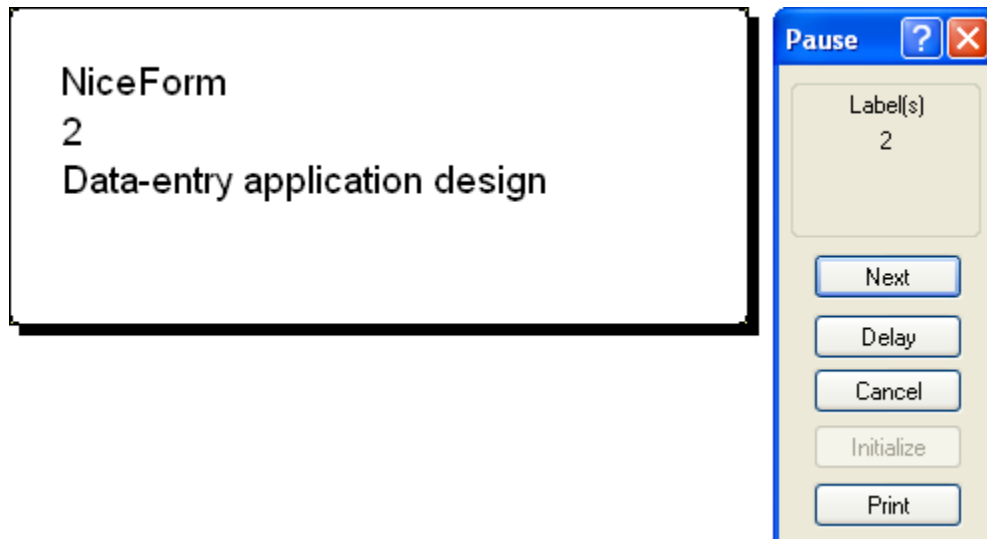
3. To choose which records to print from the database click on the **Select Records** button. The **Record Selection** dialog box will open.
4. Select the records from the database you want to print and enter the number of labels you want to print for each selected record.



Record selection dialog box

5. Click on the **OK** button. You will return to the Print dialog box.

- Click on the Preview button. Now you can preview the labels on the screen. Note that the text objects on the label change for each new record.

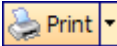


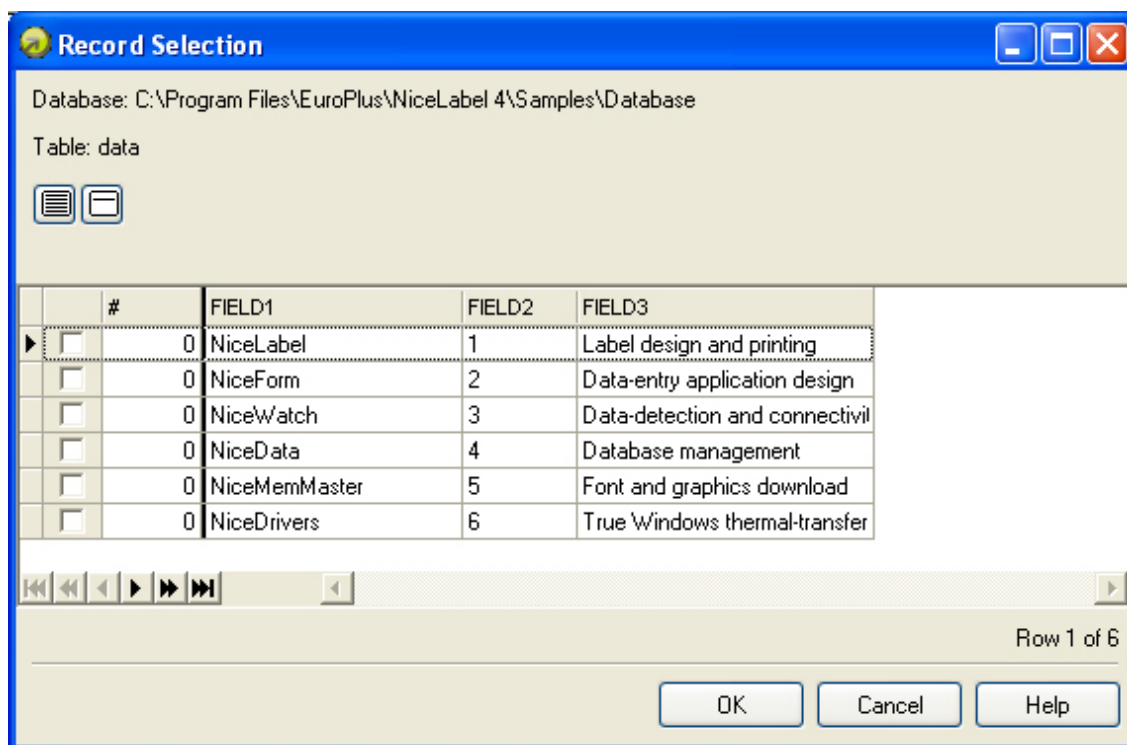
Preview of the second label in the series

- Click on the **Next** button in the command window to advance to the next label in the series. After you see the last label in the preview series, NiceLabel software will re-open the Print dialog box.
- Click on the **Close** button to close the Print dialog box.

3.2.5 Print a Label

When you are certain that the label design is correct and label preview shows the correct values from the database, you can start sending the labels to the printer. To print a label, do the following:

- Click on the print icon  in the **Standard Toolbar**.
The Print dialog box will open (same as the print preview dialog box).
- Click on the button **Select Records** and select the records you want to print and specify the label quantity for each record.



Selecting records and specifying label quantity

3. Click on the **OK** button.
4. Click on the **Print** button to start printing labels.
5. Click on the **Close** button to close the dialog box.

3.3 Designing an Advanced Label

In this section you will learn how to design a label with advanced features. You will learn how to create a label using:

- a. GS1-128 bar code.
- b. Links to advanced databases.
- c. Advanced objects and functions.

3.3.1 Create a Label with GS1-128 Compliance


GS1-128 compliant bar codes are often used for encoding data into the bar code. NiceLabel software provides an GS1-128 Bar Code Wizard that helps you merge the data components (Application Identifiers) into the final bar code.

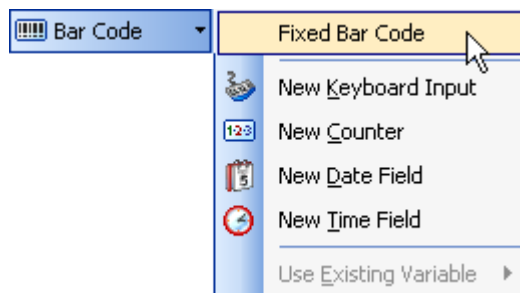
Edit Bar Code GS1-128



The designed label with GS1-128 bar code

To define the GS1-128 bar code, you first select this bar code type and assign a value to it.

1. Click on the small arrow button next to the  Bar Code button in the **Toolbox**.
2. Select Fixed Bar Code in the context menu.



Creating a fixed bar code

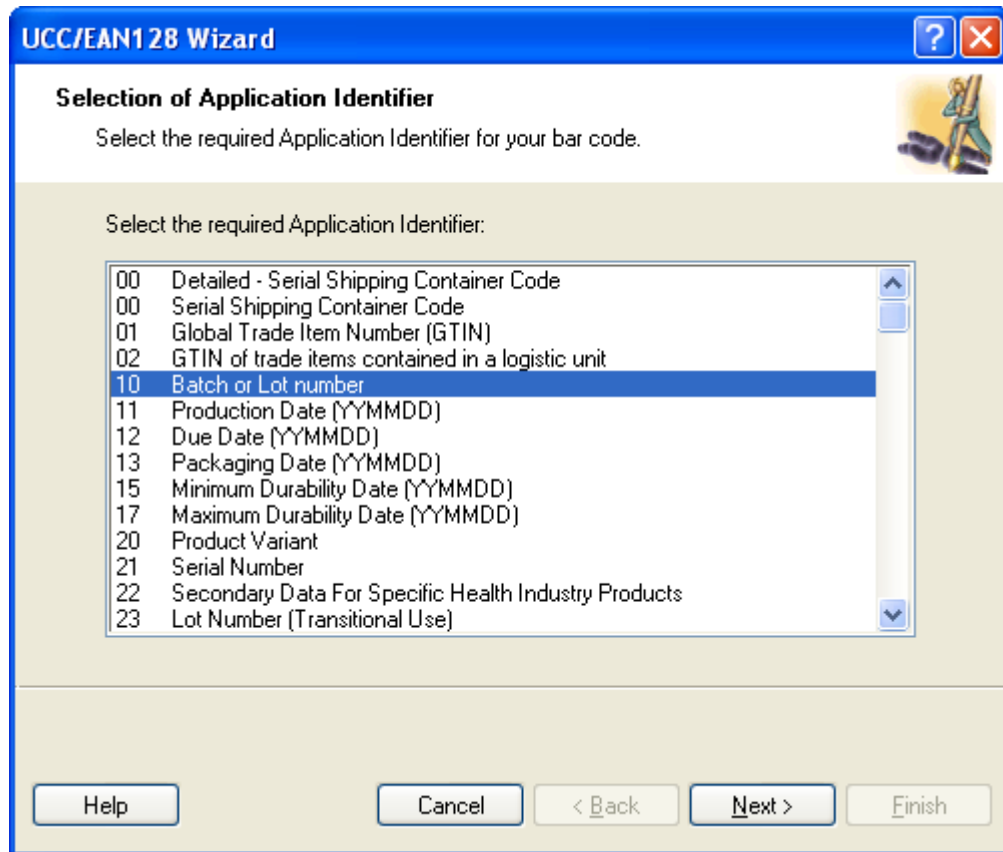
3. Move the cursor to the location on the label where you want to place the text object and click on the mouse button.
4. The wizard with object properties will open.
5. Click on the button **Define**. The dialog box *Edit Bar Code* will open.
6. Expand the group EAN.UPC and select the bar code GS1-128.
7. Click on **OK** button to go back to the *Bar Code* dialog box.
8. Click on the **Next** button.

The GS1-128 Wizard will open.

Add Content to GS1-128 Using GS1-128 Wizard

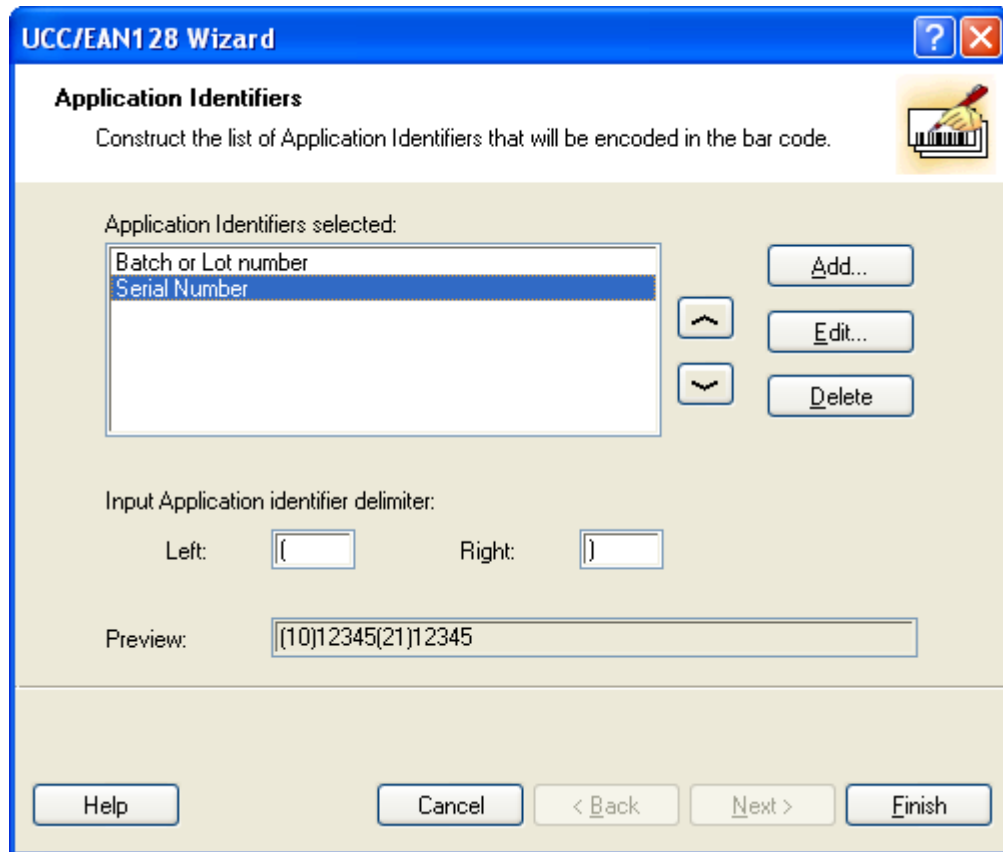
Use the GS1-128 Wizard to help you add the necessary Application Identifiers (AI) in the bar code. Complete the following steps with the wizard:

1. Select **10 Batch or Lot number**.



Selecting Application Identifier from the list

2. Click on the **Next** button.
3. Select **Fixed** and click on the **Next** button.
4. Enter the sample data, for example '12345'.
5. Click on the **Next** button. A dialog box showing all AI contained in this bar code will open.
6. Click on the **Add** button to start adding a new AI.
For example, select AI 21 (Serial Number). Repeat steps from 1 to 5 above.



Two Application Identifiers are defined

7. When you are satisfied with the designed AI and their positions within the bar code, click on the **Finish** button.

The GS1-128 bar code is placed on the label.

3.3.2 Link a Label to Advanced Databases



You can use the NiceLabel software to retrieve data from any database on your computer or network. If you have the appropriate database drivers, you can connect to the database and use the records on the label.

Note: NiceLabel Express does not have all database options available. You can only use data from text databases and Excel spreadsheets in NiceLabel Express.

With NiceLabel software you can connect to any database type as long as you have the appropriate database drivers installed on your computer. NiceLabel supports different database drivers like ODBC, OLE DB and BDE. Your computer comes pre-installed with database drivers for

frequently used database types, but you can always install additional drivers.

You have total control over which records in the database table will be printed. By default all records are printed, but you also have the option to select the records for printing. Before the labels are processed you can select the records in the table that you want to print. You can also specify the print quantity for each record.

Advanced record selection techniques are also available in NiceLabel software. You can create database filters and obtain only the records that match the conditions. The same functionality allows you to join two or more database tables together and obtain values for the same product from multiple databases.

Manual modification of the SQL sentence is available for advanced users.

Note: For more information about linking to the advanced databases please refer to the User Guide or help file.

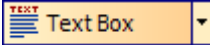
3.3.3 Using Advanced Objects and Functions in NiceLabel

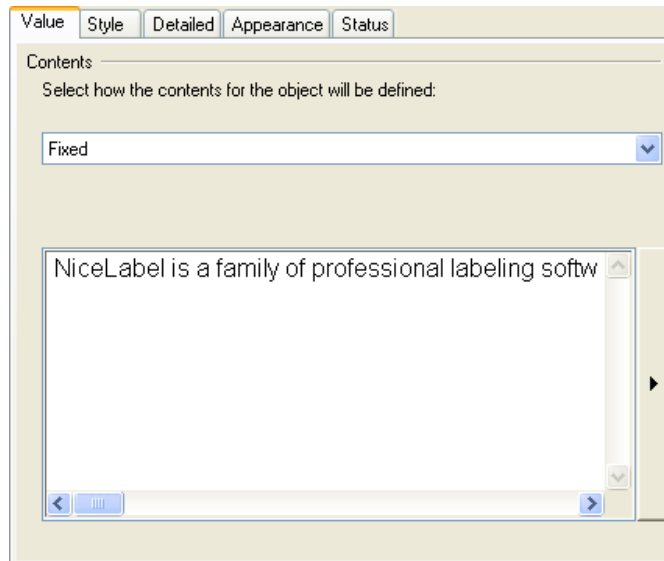


The options described in this chapter are NOT available for the NiceLabel Express edition.

Create Text Box Object

The Text Box object enables you to use free-flow text inside the designed Text Box frame without being limited to a one-line text. To create a Text Box object, do the following:

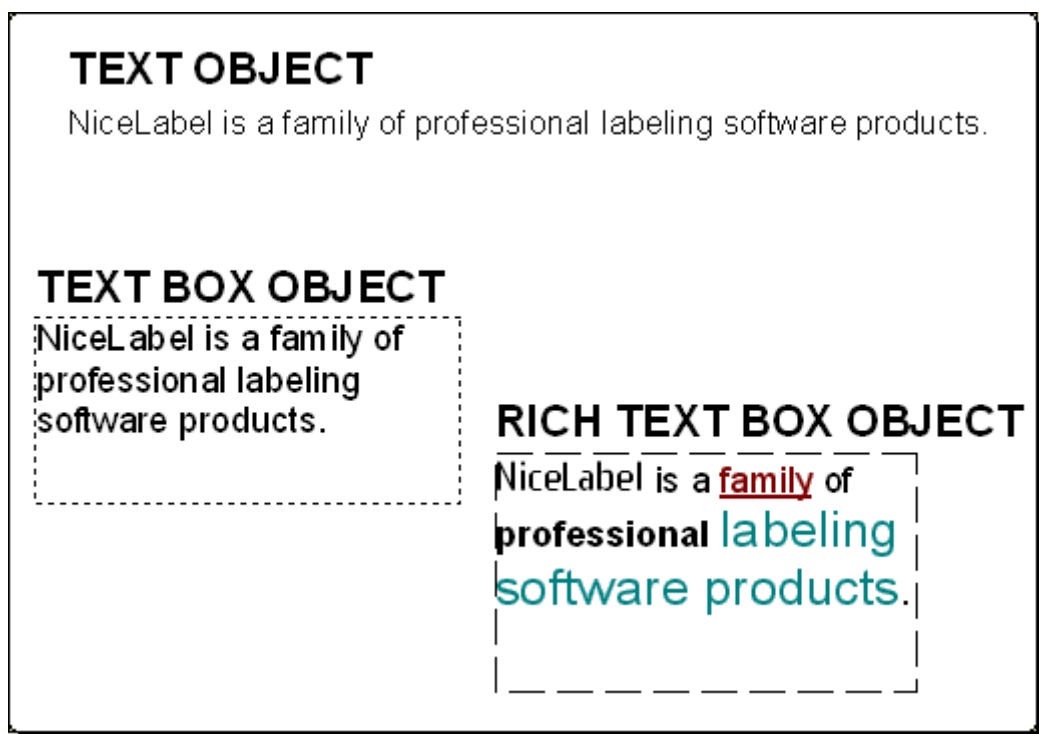
1. Click on the  button in the **Toolbox**. The text box cursor appears on the screen.
2. Move the cursor to the location on the label where you want to place the text box object and click on the mouse button. The properties of the object will open.
3. Open the **Value** tab and type in the text content.



Entering value for Text Box object

4. Click on the **OK** button. The Text Box object is placed on the label.
5. Double click the Text Box to open its properties.
6. Go to the **Detailed** tab and select the option **Best fit**.

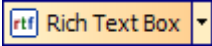
Note: When you change the size of the Text Box frame, the content will automatically align to the new size.



All three text objects are available in NiceLabel software

Create Rich Text Box (RTF) Object

The Rich Text Box object enables you to format text in any kind of font types and styles. To create a Rich Text Box object, do the following:

1. Click on the  button in the **Toolbox**. The rich text box cursor appears on the screen.
2. Move the cursor to the location on the label where you want to place the text box object and click on the mouse button. The rich text editor will open.
3. Enter the content.
4. Use the text toolbar in the editor to format the characters.
5. Click on the **OK** button. The Rich Text Box object is placed on the label.
6. Double click the Rich Text Box to open its properties.
7. Go to the **Detailed** tab and select the option **Best fit**.
8. Click on the **OK** button.

The text size in the Rich Text Box object automatically changes when you resize it.

Use Functions to Manipulate Label Data

NiceLabel software enables you to work with variable values on the label, manipulate the values and use them with other label objects. NiceLabel software offers a group of functions that help you work with the variable values. There is always some input to the function that the function manipulates and always some output that is stored to a function-generated variable. The function-generated variable can be linked to label objects or used in other functions.

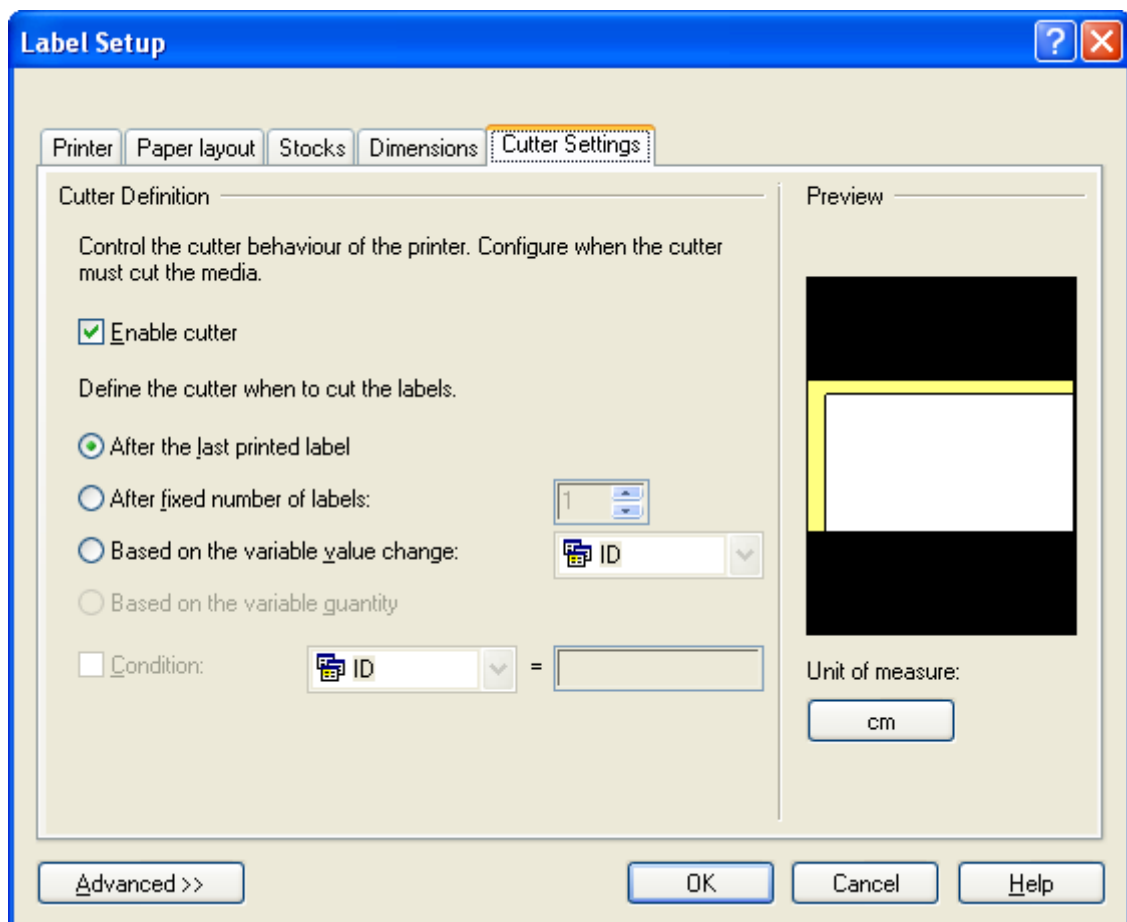
There are many NiceLabel functions available, such as Concatenate (for linked fields), Subset, Date addition, FACT, HIBC and Visual Basic script. Visual Basic script is a powerful function allowing you to perform advanced data manipulation.

Note: For more information about NiceLabel functions please refer to the User Guide or help file.

Control Cutter in the Printer

If you have a thermal printer equipped with the cutter, you can control the cutter action from NiceLabel software. You must use NiceDriver for your thermal printer if you want to control the installed cutter. To set up the cutter control, do the following:

1. Select the option **Label Setup** in the File menu.
2. Go to the Cutter Settings tab.
3. Select the option **Enable cutter**.



Enabling cutter functionality

Note: NiceLabel Express edition can control the cutter. However, you cannot use the Label Setup dialog box. Instead you must define the cutter parameters in the properties of the NiceDriver printer driver. Please refer to the online help for instructions how to set up cutter in NiceLabel Express.

3.4 Designing an RFID Smart Label



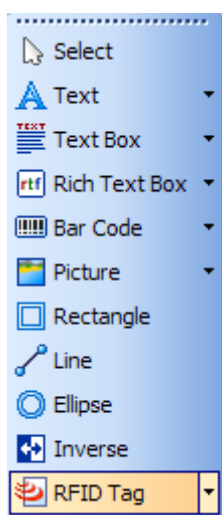
Radio frequency identification (RFID) refers to technologies that use radio waves to automatically identify individual or groups of items. NiceLabel software and NiceDrivers support programming and printing of RFID tags embedded in a label.

Note: You can use RFID functionality in NiceLabel software only if you have installed a NiceDriver with RFID support. Make sure you install the NiceDriver of your RFID printer before you design and print an RFID smart label.

3.4.1 Create RFID Smart Label

1. Click on button in the **Standard toolbar**. Label Setup Wizard will start.
2. Select the printer that supports RFID smart label printing.
3. Click on the **Finish** button.

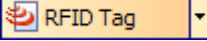
You will see that ‘RFID Tag’ command is enabled in the **Toolbox** on the left side of the NiceLabel software working window.

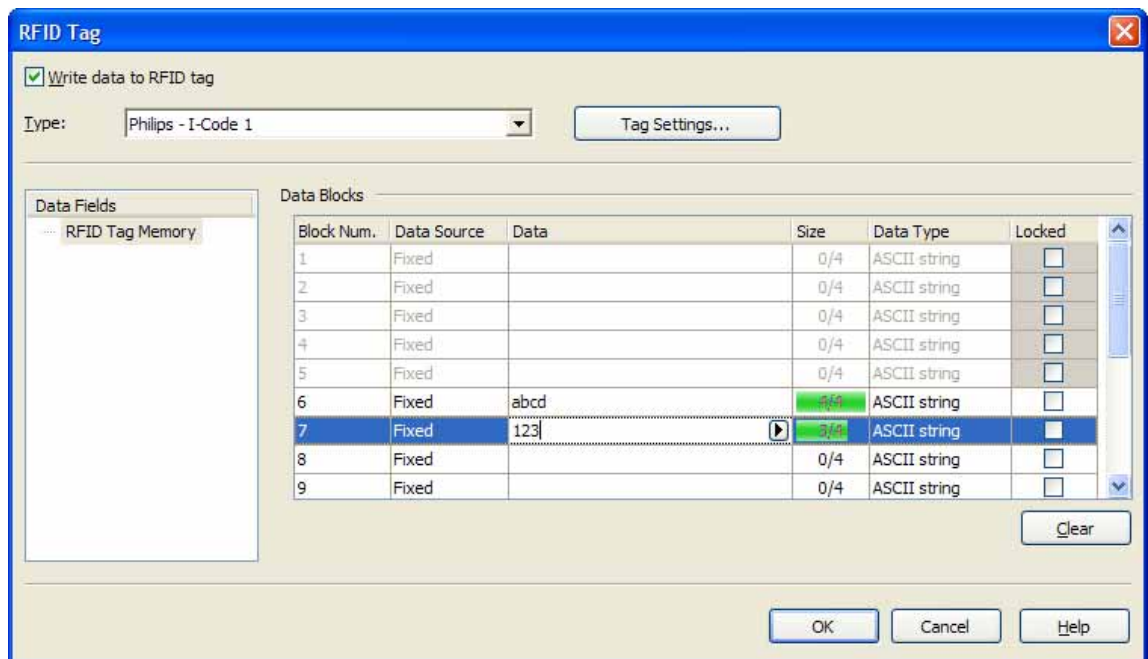


RFID Tag is available for use

3.4.2 Encode RFID Tag

The RFID tags embedded into the label are usually of two types: ISO tags, which encode blocks of data; or UHF tags, which can encode one string of data.

1. Click on the button  in the **Toolbox** to begin encoding the data. The RFID Tag dialog box opens.



Encoding contents for RFID Tag

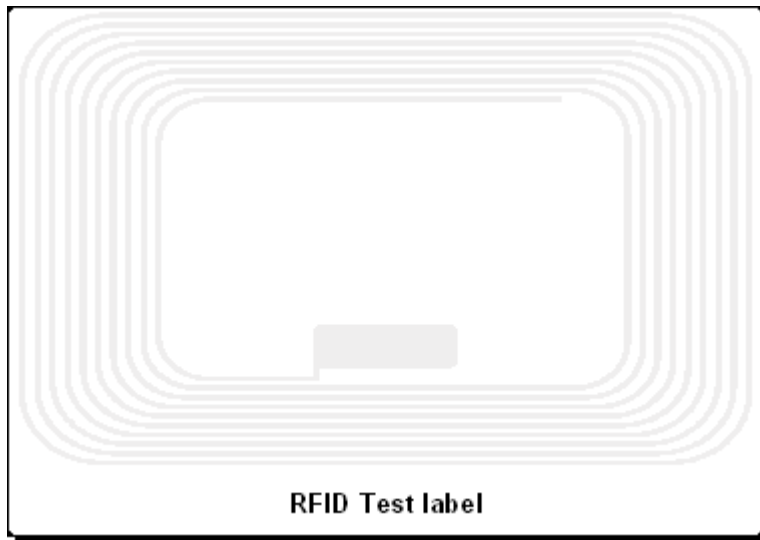
2. Select the type of the RFID Tag you want to use from the list box on the top of the dialog box.
3. Make sure the option **Write data to RFID tag** is enabled.

Note: If you don't select this option, the definition of tag content is saved but is not sent to the printer during label printing.

4. Go to the first available block in the section **Data Blocks** and click on the **Data** cell in the table.

Note: You might not see the table-like structure. Instead you can see edit fields to enter the RFID data. The type of data entering depends on the type of selected RFID tag.

5. Type in the value you want to encode into this block. Repeat the process for other blocks.
6. Click on the **OK** button. A schematic view of the RFID Tag antenna will open in the label background identifying the definition of the RFID data on the label.



RFID Tag antenna in the background

7. You can continue designing the smart label with non-RFID data as described in the previous sections.

Whenever you print the label, the RFID data will be sent to the printer. The printer prints the RFID smart label and programs the RFID tag embedded into the label at the same.

Note: NiceLabel can work with Unique RFID Tag numbers. Each RFID tag has embedded a unique serial number. Some printers can read the Unique RFID Tag number that can be used on the label linked with some label objects, like text and bar codes.

4. Other NiceLabel Applications

NiceLabel software provides much more than just label design and printing. In the following chapter you will learn how to

- Simplify label printing by using forms: Forms run as a standalone application and are modified to meet user requirements.
- Manage label printing by using NicePrint: Select all print features in one window.
- Use automatic label printing by using NiceWatch: NiceLabel integration middleware module adds label printing to any existing application.
- Store frequently used label elements on a printer for faster label printout or usage from other applications.

You need the NiceLabel Suite edition for most of the advanced tasks discussed in this chapter.

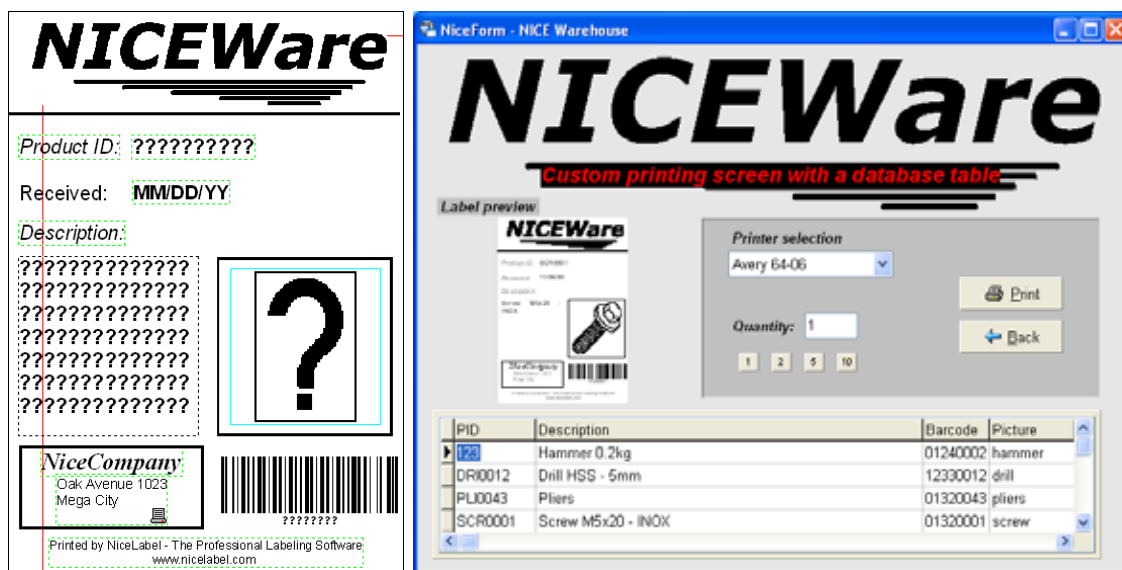
4.1 Label Printing Using Custom Forms



NiceForm is a front-end application generator available in the NiceLabel Suite edition. You can create your own custom designed data-entry application without programming skills. The main purpose of using forms is easy-to-use and error-free label printing for the operator.

The following figure shows the label file that includes prompted fields, variable picture and bar code object. The form file is always generated from the label file. Before you can create a form you have to create a label with NiceLabel Pro. The label file provides simple access to all necessary information and commands.



On the form, you can select the record from the table at the bottom. You can also use a printer selection drop-down menu and a button to print label with pre-defined quantity.

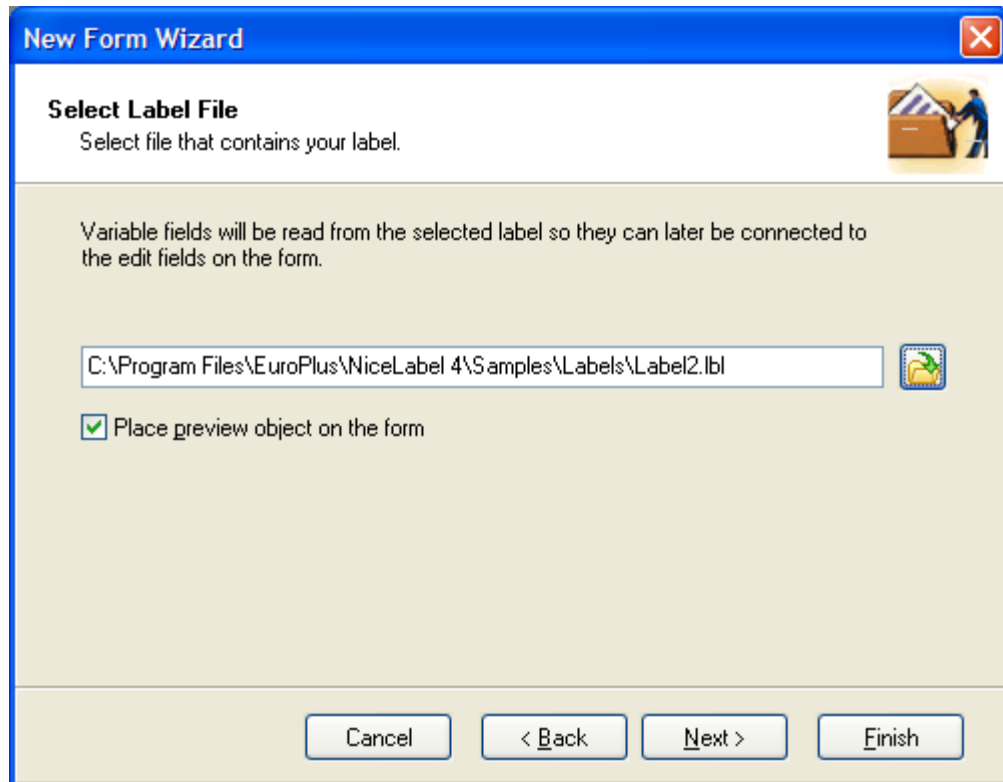


The label (on the left) is the basis for the form (on the right).



4.1.1 Create a Form

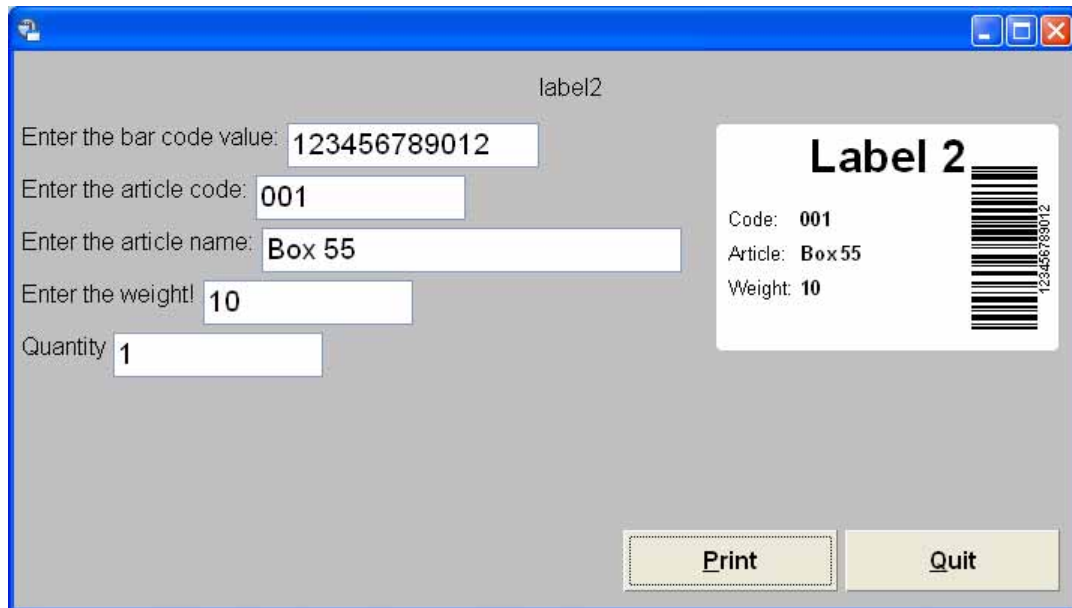
The New Form Wizard helps you create a form easily and connects to the label, obtains variables from the label and generates the form file. Your label must be designed before you can define a form. To create a form, do the following:

1. Open NiceForm.
2. Click on the button  to start the New Form Wizard or go to the File menu and select the command New/ New Form Wizard. The New Form Wizard will open.
3. Read the summary and click on the **Next** button.
4. Select **Standard Windows desktop application** for the type of the platform. Click on the **Next** button.
5. Click on the  button and browse to the sample label LABEL2.LBL.
6. Enable the option **Place preview object on the form** and click on the **Next** button.



Selecting the label file in New Form Wizard

7. Select **Use default template** upon which the generated form will be created and click on the **Next** button. A new window will open.
8. Select Vertical arrangement of the object and click on the **Next** button. A new window will open.
9. Select Left arrangement of the captions and click on the **Next** button. A new window will open.
10. The last screen of the wizard displays an overview of your selection. Click **Finish** to submit the settings and the form will be generated.
11. Save the form to disk before running it. Click on the  button or select command **Save** from the *File* menu.
12. To test the behavior of the form, run it by clicking on the  button or selecting the **Run** command in the *Design* menu.
13. Type in the values for variable fields on the label. See how the label preview refreshes for each entered data.
14. Click on the **Print** button to print the label to the default printer.
15. Click on the **Quit** button to close the running form.




The generated form file

Note: To protect the form from any changes, make a shortcut to the form file on the desktop PC. If you double-click on the shortcut, the form will run and the operator will not be able to switch back to the design mode.

4.1.2 Modify a Form

You can edit or re-design forms with the NiceForm application. To do so, you must have sufficient access permission to the NiceLabel software. Designing forms in NiceForm is similar to label design in NiceLabel Pro. Both applications have similar working interfaces.

To modify a form, do the following:

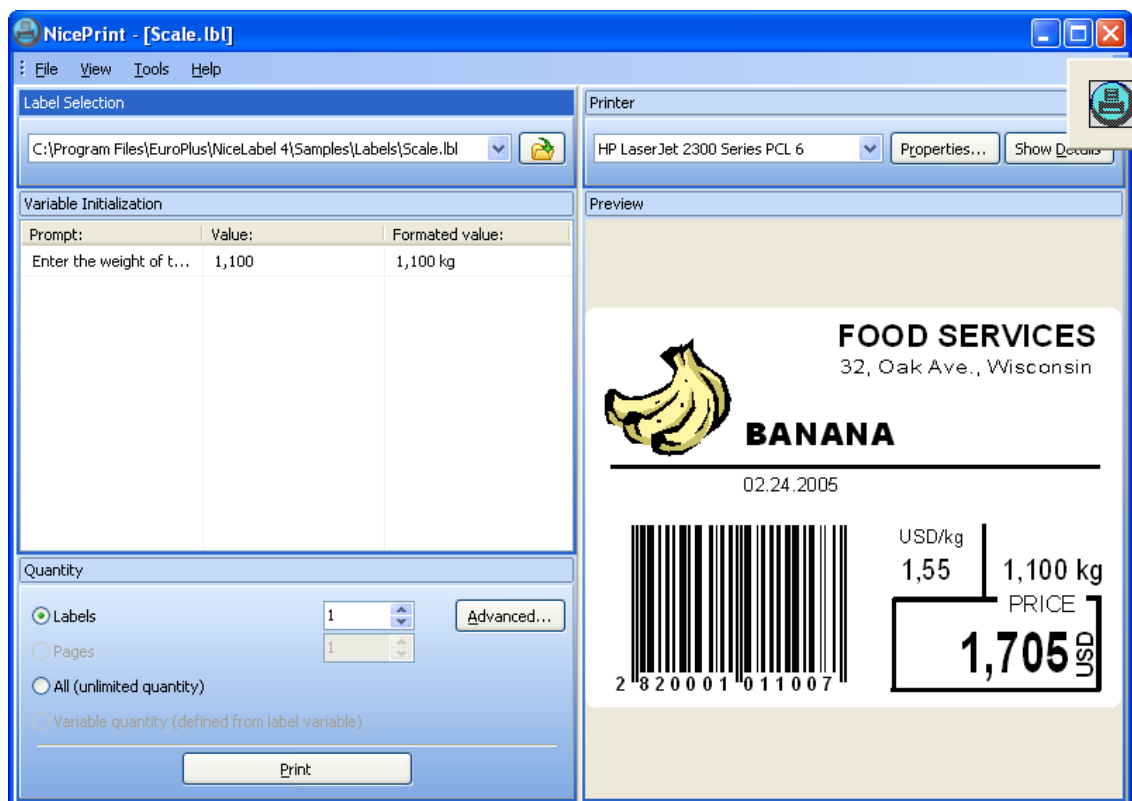
1. Open NiceForm.
2. Click on the  button or select the command **Open** in the File menu.
3. Browse to and open the form file you want to modify. All NiceForm files have the extension XFF.
4. Apply changes to the form. Use the **Toolbox** on the left side to place new objects on the form.
5. Double-click the form objects to display and change their properties.
6. Make your changes on the form and save the file.

4.2 Label Printing Using NicePrint



NicePrint is a standalone application that enables fast and easy label printing. You can start NicePrint from the NiceLabel Suite program group in the Start menu. Using NicePrint, you can select all necessary printing actions in one single window:

- Select the label for printing
- Set the values for variables
- Select records in the database
- Change the printer and its properties
- Define label quantity
- See label preview
- Print the label



Application NicePrint provides fast access to label printing

NicePrint is available in the NiceLabel Suite edition.

4.3 Automatic Label Printing



NiceLabel software offers automatic and unattended bar code label printing. The integration middleware module NiceWatch is used to monitor different system events and triggers pre-defined actions upon the change.

Existing databases and other sources of data can easily be used as the input for labels. A file dropped in any folder is detected and the data is extracted from the file and used on the labels. The whole process is automated and requires no user intervention. The integration middleware module NiceWatch handles several triggers at the same time and prints labels to any number of printers.

Other detection methods include communication on the serial port, communication over the TCP/IP port and checking of e-mail messages on the mail server.

The built-in filters gather the data from trigger events. Data can be manipulated with the powerful Visual Basic scripting.

For more information about automatic label printing please refer to the NiceLabel User Guide, White Papers and tutorials on the NiceLabel Web site at **www.nicelabel.com**.

4.4 Storing Fonts and Graphics to the Printer



NiceLabel software provides fast and reliable label printing to thermal printers using the NiceDrivers which are optimized Windows thermal printer drivers. NiceDrivers support printer hardware accessories like cutters and different label sensors but also printer resident objects. Such objects are fonts and bar codes that are built into the printer. Printers always print labels that use resident objects very quickly because the driver generates a print file with references to the objects already stored in the printer's firmware. The print file is short and can be transferred quickly to the printer.

When you print labels with graphic and non-resident objects all unsupported objects are converted to pictures and sent to the printer as graphics. This approach ensures that the label is successfully printed on every printer. But the printout speed varies on different printers, depending on the number of objects that are recognized internally by the printer.

The solution for fast printing is available with the memory card manager NiceMemMaster which enables you to store on the printer

- Windows fonts (true type, open type, type1 and other)
- Pictures

Fonts and pictures can be downloaded to the printer's internal memory or add-on memory cards. The number of objects that can be downloaded is limited only by the memory size.

Once the objects are stored in the printer, you do not have to send them to the printer again. The objects are re-called from the printer memory ensuring fast response at print time. Other applications can also take advantage of the downloaded objects and print labels quickly.

The content of one memory card can be used on many labels.

4.5 Managing Databases



NiceLabel software provides the database management application NiceData. You can use NiceData to complete the following tasks:

- Opening a database
- Adding new records
- Removing existing records
- Search for data
- Modifying database structure
- Creating new database

5. Technical Support

If you experience any technical difficulties using the NiceLabel software, the first thing to do is to refer to the on-line help and User Guides available on the NiceLabel CD. You will find a comprehensive **How to** section that explains how to use NiceLabel software.

5.1 Online Support

You can find the latest builds, updates, workarounds for problems and Frequently Asked Questions (FAQ) under the Support section on the product Web site at **www.nicelabel.com**. If you cannot solve the problem on your own, please contact your local vendor or representative offices listed in the chapter **Contact Information**.

For more information please refer to:

Support FAQ: <http://www.nicelabel.com/Support/FAQ>

NiceLabel Tutorials: <http://www.nicelabel.com/Learning-center/Tutorials>

NiceLabel Forums: <http://forums.nicelabel.com/>

5.2 Contact Information

Head Office:

Euro Plus d.o.o.
Ulica Lojzeta Hrovata 4c
SI-4000 Kranj
Slovenia
Tel: +386 4 280 50 00
Fax: +386 4 233 11 48
support@nicelabel.com
www.nicelabel.com

French Office:

North American Office:

Niceware International, LLC
10437 Innovation Drive
Suite 147
Milwaukee, WI 53226
Tel: +1 414 476 NICE (6423)
Fax: +1 414 476 7955
Tech Support: +1 414 476 6408
support@nicewareintl.com
www.nicewareintl.com

NiceLabel France :

Cobarsoft SARL
6 rue Salengro
ZI hippodrome
32000 Auch
France
Tel: +33 (0) 562 709 201
Fax: +33 (0) 562 708 004
support@nicelabel.fr
www.nicelabel.fr

German Office:

NiceLabel Germany GmbH
Liebknechtstr. 29
63179 Obertshausen
Germany
+49 (0)6104 405 400 Tel
+49 (0)6104 405 4020 Fax
info@nicelabel.de
www.nicelabel.de

6. Index

A

Activation, 18

 Activation Code, 22, 25, 29

 Edition Upgrade, 40

 Hardware Key, 19

 Network Edition, 19

 Network License Pack Upgrade, 44

 Network Upgrade, 44

 Network, Workstation, 31

 Parallel Key, 19

 Software Key, 19

 Upgrades, 37

 Version Upgrade, 37

 Web, on the, 21

Alignment, Label, 57

B

Bar Code, 54

 GS1-128, 72

 Insert Bar Code, 54

C

Contact, 90

Control Cutter, Printer, 79

D

Data, Serialized. *See* Variable Field

Database, 65

 Advanced, 75

 Connect Label to, 65

 Format Data, 66

NiceData, 89

Select Data, 69

Text, 65

Text File Wizard, 66

Date Variable. *See* Variable Field

Demo Mode. *See* NiceLabel

Design, Label. *See* Label Design

Developer Series, 6

Dimensions, Label, 50

E

GS1-128, 72

Enterprise Print Manager, 19, 29, 30

Enterprise Series, 5, 19

EPM. *See* Enterprise Print Manager

Express. *See* NiceLabel Express

F

Form. *See* NiceForm

Function, 76, 78

H

Hardware Key

 Parallel Key, Installation and
 Activation, 19

I

Installation, 8

 Edition Upgrade, 34

 Hardware Key, 19

 Network Edition, 8, 15

 Network Edition, Workstation, 17

- Network Upgrade, 35, 36
- NiceDriver, 12
- Parallel Key, 19
- Printer Driver, 12
- Single User Edition, 8, 9
- Software Requirements, 8
- System Requirements, 8
- Upgrade, 32
- Version Upgrade, 33, 35, 36, 41

K

- Key number, 22, 25
- Keyboard Entry. *See* Variable Field

L

- Label Design, 48
 - Advanced Label, 72
 - Basic Label, 49
 - GS1-128 Compliance, 72
 - RFID Smart Label, 80
- Label Printing, 59, 87
 - Automatic Printing, 88
 - Database, from, 71
 - Preview, 59
 - Print Preview, 69
 - Printer Driver, Installation, 12
 - Printer Settings, Change, 64
 - Select a Printer, 50

N

- Network Edition. *See* NiceLabel
 - Network
- NiceData, 4
 - Managing Database, 89
- NiceDriver. *See* Printer Driver
- NiceForm, 4, 83
 - Create, 84
 - Modify, 86

- NiceLabel
 - Demo Mode, 32
 - NiceLabel Express, 4
 - NiceLabel Pocket PC Designer, 5
 - NiceLabel Pro, 4
 - NiceLabel Pro Print Only, 4
 - NiceLabel SDK, 6
 - NiceLabel Suite, 3
 - NiceLabel Suite Print Only, 4
 - Pocket NiceLabel, 5
 - Product Overview, 3
 - Software Package, Content, 6
- NiceLabel Express. *See* NiceLabel
- NiceLabel Network, 15
 - Activation, 25, 31
 - Installation, 15, 17
 - System Requirements, 8
- NiceLabel Pocket PC Designer. *See* NiceLabel
- NiceLabel Print Center, 5, 19, 29, 31
- NiceLabel Pro. *See* NiceLabel
- NiceLabel Pro Print Only. *See* NiceLabel
- NiceLabel SDK. *See* NiceLabel
- NiceLabel Suite. *See* NiceLabel
- NiceLabel Suite Print Only. *See* NiceLabel
- NiceLabel WebSDK, 6
- NiceMemMaster, 4, 89
- NicePrint, 4, 87
- NiceWatch, 4
 - Automatic Label Printing, 88
- NiceWatch Enterprise, 5

O

- Object
 - Bar code, 54
 - Picture, 56

Rich Text Box (RTF), 78

Text Box, 76

Text, Non-changing, 52

Online Support. *See* Support

P

Parallel Key. *See* Hardware Key

Pocket NiceLabel. *See* NiceLabel

Pocket PC Designer. *See* NiceLabel

Pocket PC Designer

Prefix, 63

Print Center. *See* NiceLabel Print
Center

Printer Driver, Installation, 12, 13

Printing. *See* Label Printing

Pro Print Only. *See* NiceLabel Pro
Print Only

Product Overview. *See* NiceLabel

R

Radio frequency identification (RFID),
80

Design, Smart Label, 80

RF tag, encode, 80

Registration, 47

Registration number, 22, 25

Restrictions. *See* Software Restrictions

RFID. *See* Radio frequency
identification (RFID)

S

SDK. *See* NiceLabel SDK

Serialized Data. *See* Variable Field

Software Requirements, 8

Software Restrictions, 7

Standard Series, 3

Suffix, 63

Suite. *See* NiceLabel Suite

Suite Print Only. *See* NiceLabel Suite
Print Only

Support, 90

System Requirements, 8

T

Technical Support. *See* Support

Time Variable. *See* Variable Field

U

Upgrade, 32

Activation, 37

Edition, 34, 40

Installation, 32

Network, 35, 36, 44

Network, License Pack, 44

Version, 33, 35, 36, 37, 41

V

Variable. *See* Variable Field

Variable Field, 60

Date, 62

Keyboard Entry, 60

Serialized Data, 61

Time, 62

W

WebSDK. *See* NiceLabel WebSDK
Wizard

Activation, 22, 25

GS1-128, 73

Installation, 10

Installation, Network Server, 16

Label Setup, 49

Printer Installation, 13

Windows Add Printer, 14

